

## Section 1. Energy Overview

Energy production during December 2005 totaled 5.8 quadrillion Btu, a 4.2-percent decrease compared with the level of production during December 2004. Production of crude oil decreased 8.1 percent; natural gas (dry) decreased 3.0 percent; conventional hydroelectric power decreased 15.2 percent; nuclear electric power increased 4.6 percent; and coal decreased 2.8 percent; compared with the level of production during December 2004.

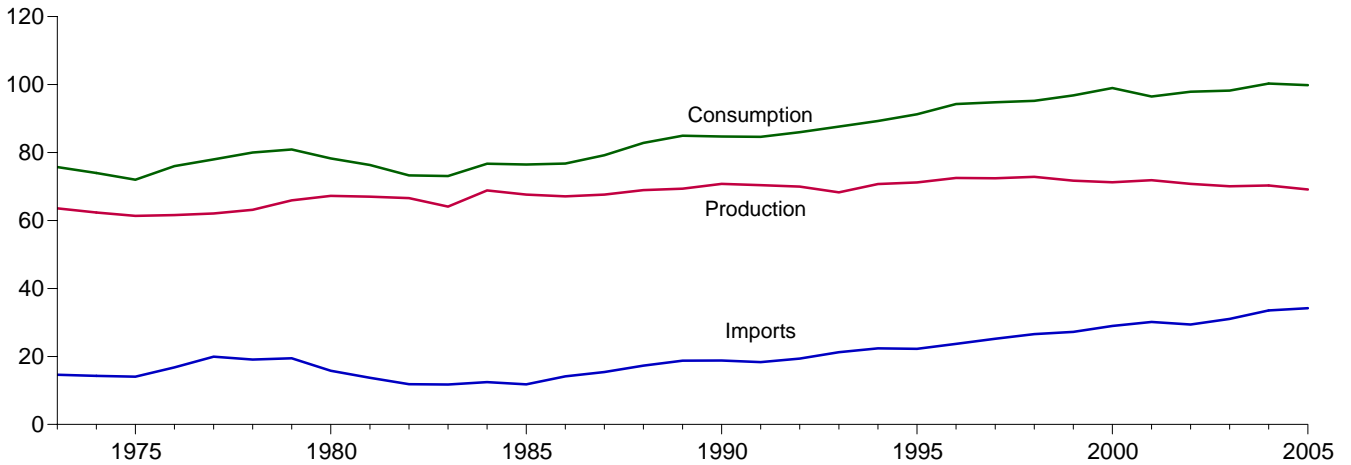
Energy consumption during December 2005 totaled 9.2 quadrillion Btu, slightly lower than the level of consumption during December 2004. Consumption of conventional

hydroelectric power decreased 15.2 percent; natural gas decreased 0.3 percent; petroleum increased 1.0 percent; coal increased 0.4 percent; and nuclear electric power increased 4.6 percent, compared with the level 1 year earlier.

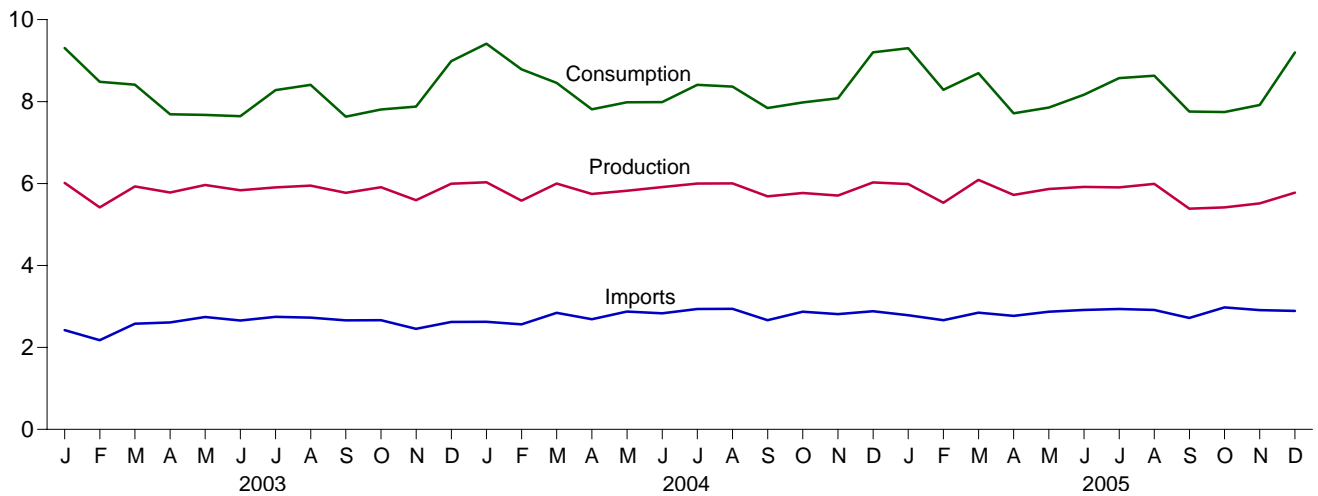
Net imports of energy during December 2005 totaled 2.5 quadrillion Btu, 2.0 percent above the level of net imports 1 year earlier. Petroleum products net imports increased 42.8 percent; natural gas net imports decreased 15.3 percent; crude oil net imports decreased 1.0 percent; and coal net exports decreased 7.3 percent, compared with the level in December 2004.

**Figure 1.1 Energy Overview**  
(Quadrillion Btu)

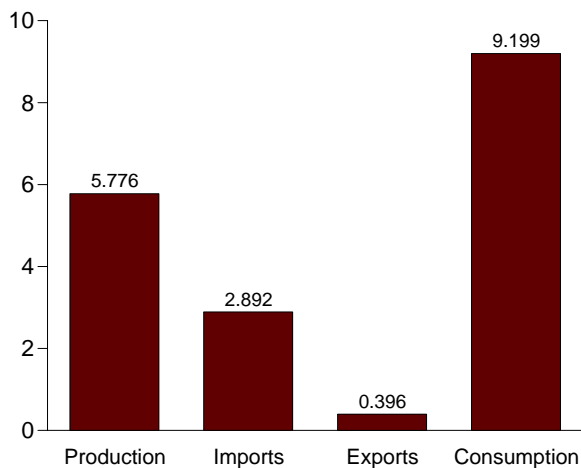
Consumption, Production, and Imports, 1973-2005



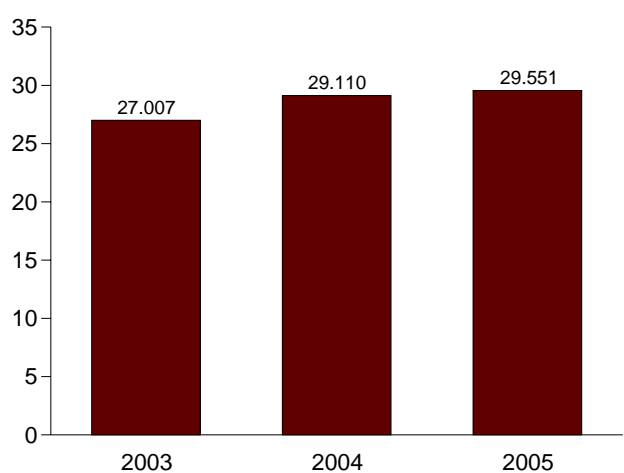
Consumption, Production, and Imports, Monthly



Overview, December 2005



Net Imports, January-December



Note: Because vertical scales differ, graphs should not be compared.  
 Web Page: <http://www.eia.doe.gov/emeu/mer/overview.html>.  
 Sources: Tables 1.1 and 1.4.

**Table 1.1 Energy Overview**  
(Quadrillion Btu)

	Production	Imports	Exports	Adjustments <sup>a</sup>	Consumption
<b>1973 Total</b> .....	<b>63.585</b>	<b>14.613</b>	<b>2.033</b>	<b>-0.456</b>	<b>75.708</b>
<b>1975 Total</b> .....	<b>61.357</b>	<b>14.032</b>	<b>2.323</b>	<b>-1.067</b>	<b>71.999</b>
<b>1980 Total</b> .....	<b>67.241</b>	<b>15.796</b>	<b>3.695</b>	<b>-1.054</b>	<b>78.289</b>
<b>1985 Total</b> .....	<b>67.647</b>	<b>11.781</b>	<b>4.196</b>	<b>1.238</b>	<b>76.469</b>
<b>1990 Total</b> .....	<b>70.765</b>	<b>18.817</b>	<b>4.752</b>	<b>-1.126</b>	<b>84.704</b>
<b>1995 Total</b> .....	<b>71.184</b>	<b>22.260</b>	<b>4.511</b>	<b>2.315</b>	<b>91.250</b>
<b>1996 Total</b> .....	<b>72.504</b>	<b>23.702</b>	<b>4.633</b>	<b>2.683</b>	<b>94.256</b>
<b>1997 Total</b> .....	<b>72.430</b>	<b>25.215</b>	<b>4.514</b>	<b>1.637</b>	<b>94.768</b>
<b>1998 Total</b> .....	<b>72.833</b>	<b>26.581</b>	<b>4.299</b>	<b>.078</b>	<b>95.192</b>
<b>1999 Total</b> .....	<b>71.714</b>	<b>27.252</b>	<b>3.715</b>	<b>1.585</b>	<b>96.836</b>
<b>2000 Total</b> .....	<b>71.274</b>	<b>28.973</b>	<b>4.006</b>	<b>2.720</b>	<b>98.961</b>
<b>2001 Total</b> .....	<b>71.884</b>	<b>30.157</b>	<b>3.770</b>	<b>-1.798</b>	<b>96.472</b>
<b>2002 Total</b> .....	<b>70.763</b>	<b>29.406</b>	<b>3.661</b>	<b>1.369</b>	<b>97.877</b>
<b>2003</b> January .....	6.015	2.423	.376	1.246	9.309
February .....	5.419	2.175	.298	1.187	8.484
March .....	5.931	2.580	.313	.217	8.414
April .....	5.782	2.610	.330	-.370	7.692
May .....	5.964	2.744	.355	-.678	<sup>R</sup> 7.676
June .....	5.836	2.658	.350	-.502	7.643
July .....	5.904	2.747	.338	-.034	8.280
August .....	5.950	2.726	.334	.067	8.408
September .....	5.774	2.661	.324	-.477	7.633
October .....	5.910	2.663	.350	-.414	7.808
November .....	5.593	2.453	.339	.170	7.877
December .....	5.994	2.621	.346	.717	8.986
<b>Total</b> .....	<b>70.072</b>	<b>31.060</b>	<b>4.054</b>	<b>1.130</b>	<b>98.209</b>
<b>2004</b> January .....	<sup>R</sup> 6.032	2.624	.299	1.056	9.414
February .....	5.580	2.562	.312	.956	8.786
March .....	6.000	2.843	.388	.001	8.456
April .....	5.746	2.689	.410	-.214	7.811
May .....	5.825	2.875	.390	-.328	7.982
June .....	5.913	2.832	.390	-.367	7.988
July .....	6.000	2.940	.372	-.158	8.410
August .....	6.005	2.944	.375	-.207	8.366
September .....	5.688	2.665	.362	-.148	7.843
October .....	5.768	2.873	.351	-.310	7.980
November .....	5.705	2.812	.350	-.087	8.081
December .....	6.028	2.884	.434	.723	9.200
<b>Total</b> .....	<b>70.292</b>	<b>33.543</b>	<b>4.433</b>	<b>.916</b>	<b>100.318</b>
<b>2005</b> January .....	<sup>R</sup> 5.989	<sup>R</sup> 2.788	.368	<sup>R</sup> .895	<sup>R</sup> 9.304
February .....	<sup>R</sup> 5.532	<sup>R</sup> 2.666	<sup>R</sup> .377	<sup>R</sup> .468	<sup>R</sup> 8.290
March .....	<sup>R</sup> 6.089	<sup>R</sup> 2.848	<sup>R</sup> .416	<sup>R</sup> .175	<sup>R</sup> 8.695
April .....	<sup>R</sup> 5.721	<sup>R</sup> 2.769	.412	<sup>R</sup> -.364	<sup>R</sup> 7.714
May .....	<sup>R</sup> 5.868	<sup>R</sup> 2.873	<sup>R</sup> .447	<sup>R</sup> -.441	<sup>R</sup> 7.853
June .....	<sup>R</sup> 5.916	<sup>R</sup> 2.915	.463	<sup>R</sup> -.202	<sup>R</sup> 8.166
July .....	<sup>R</sup> 5.907	<sup>R</sup> 2.940	.402	<sup>R</sup> .128	<sup>R</sup> 8.573
August .....	<sup>R</sup> 5.993	<sup>R</sup> 2.917	<sup>R</sup> .410	<sup>R</sup> .131	<sup>R</sup> 8.630
September .....	<sup>R</sup> 5.388	<sup>R</sup> 2.718	.322	<sup>R</sup> -.028	<sup>R</sup> 7.756
October .....	<sup>R</sup> 5.419	<sup>R</sup> 2.977	.327	<sup>R</sup> -.325	<sup>R</sup> 7.744
November .....	<sup>R</sup> 5.516	<sup>R</sup> 2.912	<sup>R</sup> .323	<sup>R</sup> -.188	<sup>R</sup> 7.916
December .....	5.776	2.892	.396	.926	9.199
<b>Total</b> .....	<b>69.113</b>	<b>34.215</b>	<b>4.664</b>	<b>1.175</b>	<b>99.840</b>

<sup>a</sup> A balancing item. Includes stock changes, losses, gains, miscellaneous blending components, and unaccounted-for supply.  
R=Revised.

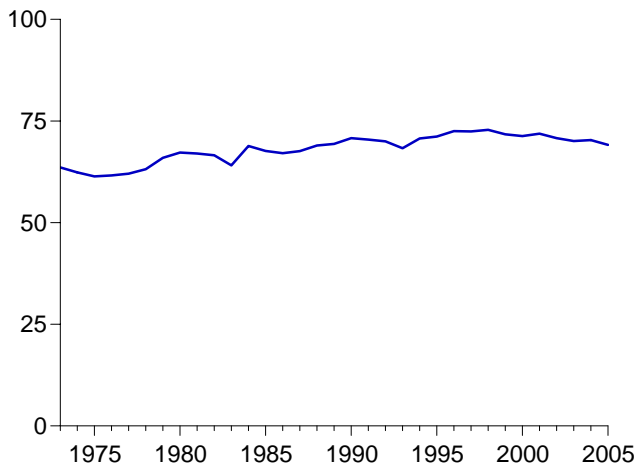
- Notes: • For definitions, see Notes 1 through 4 at end of section.  
• Totals may not equal sum of components due to independent rounding.  
• Geographic coverage is the 50 States and the District of Columbia.

Web Page: For annual data not displayed between 1973 and 1995, see <http://www.eia.doe.gov/emeu/mer/overview.html>.

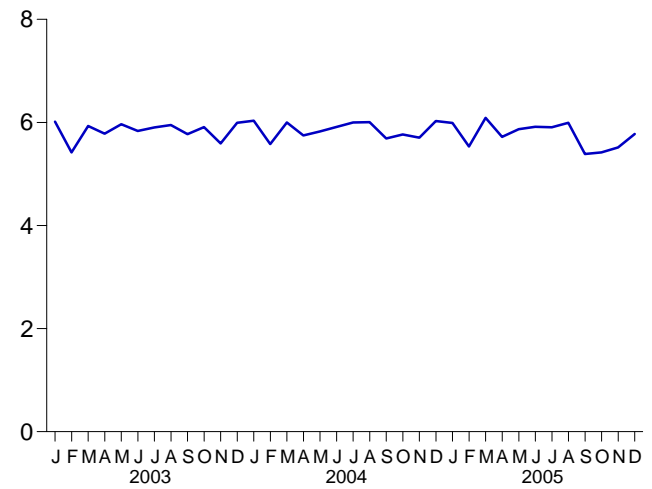
Sources: • **Production:** Table 1.2. • **Consumption:** Table 1.3. • **Imports and Exports:** Tables 3.1a, 3.1b, 4.3, 6.1, 7.1, A2-A6, and Section 2, "Energy Consumption Notes and Sources," Note 5.

**Figure 1.2 Energy Production**  
(Quadrillion Btu)

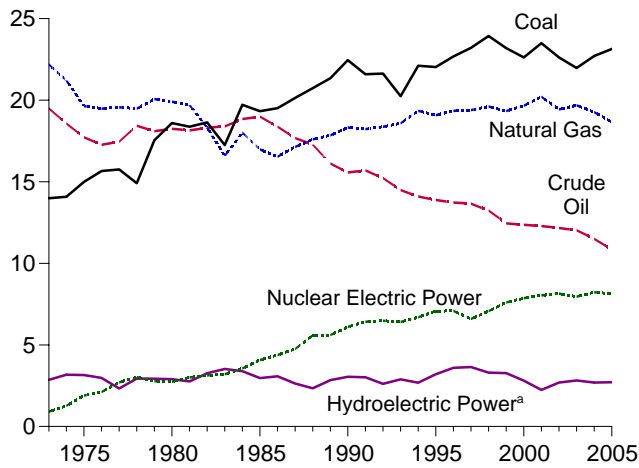
Total, 1973-2005



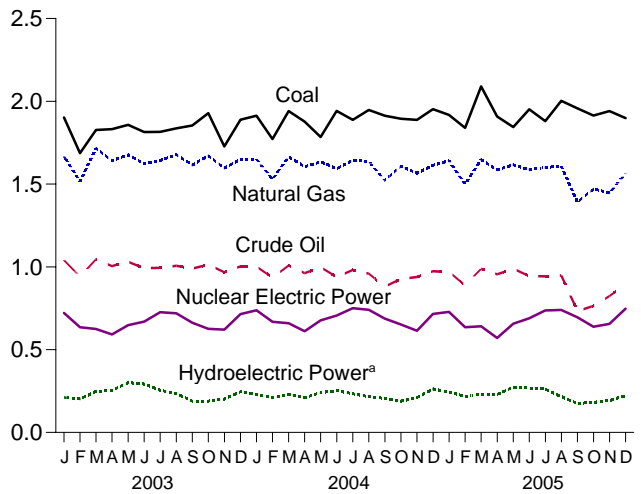
Total, Monthly



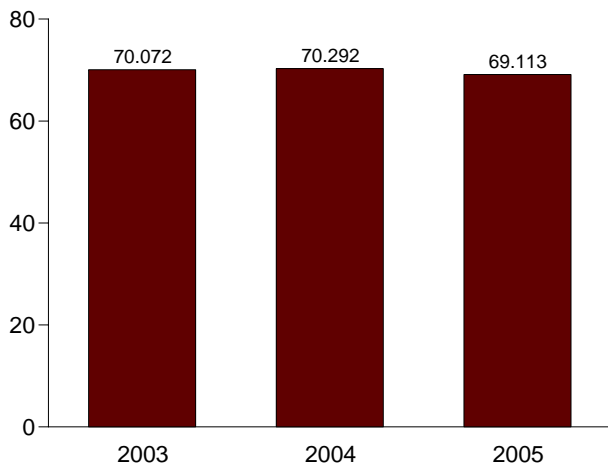
By Major Sources, 1973-2005



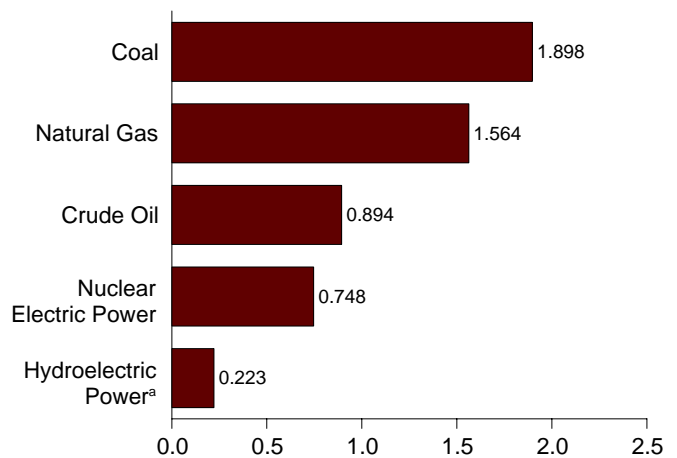
By Major Sources, Monthly



Total, January-December



By Major Sources, December 2005



<sup>a</sup>Conventional hydroelectric power.  
Note: Because vertical scales differ, graphs should not be compared.

Web Page: <http://www.eia.doe.gov/emeu/mer/overview.html>.  
Source: Table 1.2.

**Table 1.2 Energy Production by Source**  
(Quadrillion Btu)

	Fossil Fuels					Nuclear Electric Power	Renewable Energy <sup>a</sup>						Total
	Coal	Natural Gas (Dry)	Crude Oil <sup>b</sup>	NGPL <sup>c</sup>	Total		Hydro-electric Power <sup>d</sup>	Bio-mass <sup>e</sup>	Geo-thermal	Solar	Wind	Total	
1973 Total	13.992	22.187	19.493	2.569	58.241	0.910	2.861	1.529	0.043	NA	NA	4.433	63.585
1975 Total	14.989	19.640	17.729	2.374	54.733	1.900	3.155	1.499	.070	NA	NA	4.723	61.357
1980 Total	18.598	19.908	18.249	2.254	59.008	2.739	2.900	2.485	.110	NA	NA	5.494	67.241
1985 Total	19.325	16.980	18.992	2.241	57.539	4.076	2.970	2.864	.198	(s)	(s)	6.033	67.647
1990 Total	22.456	18.326	15.571	2.175	58.529	6.104	3.046	2.662	.336	.060	.029	6.133	70.765
1995 Total	22.029	19.082	13.887	2.442	57.440	7.075	3.205	3.068	.294	.070	.033	6.669	71.184
1996 Total	22.684	19.344	13.723	2.530	58.281	7.087	3.590	3.127	.316	.071	.033	7.137	72.504
1997 Total	23.211	19.394	13.658	2.495	58.758	6.597	3.640	3.006	.325	.070	.034	7.075	72.430
1998 Total	23.935	19.613	13.235	2.420	59.204	7.068	3.297	2.835	.328	.070	.031	6.561	72.833
1999 Total	23.186	19.341	12.451	2.528	57.505	7.610	3.268	2.885	.331	.069	.046	6.599	71.714
2000 Total	22.623	19.662	12.358	2.611	57.254	7.862	2.811	2.907	.317	.066	.057	6.158	71.274
2001 Total	23.490	20.205	12.282	2.547	58.523	8.033	2.242	2.640	.311	.065	.070	5.328	71.884
2002 Total	22.622	19.439	12.163	2.559	56.783	8.143	2.689	2.649	.328	.064	.105	5.836	70.763
2003 January	1.902	1.667	1.040	.204	4.813	.721	.211	.229	.029	.005	.006	.481	6.015
February	1.686	1.515	.940	.190	4.332	.635	.203	.211	.027	.005	.008	.452	5.419
March	1.827	1.715	1.046	.200	4.788	.625	.248	.226	.029	.005	.011	.518	5.931
April	1.832	1.642	1.005	.191	4.669	.592	.254	.224	.027	.005	.011	.521	5.782
May	1.857	1.676	1.031	.181	4.746	.648	.301	.225	.028	.006	.010	.570	5.964
June	1.814	1.623	.992	.177	4.607	.669	.293	.222	.029	.006	.011	.560	5.836
July	1.815	1.643	.994	.191	4.643	.726	.254	.237	.029	.006	.010	.535	5.904
August	1.836	1.677	1.006	.197	4.717	.719	.235	.236	.029	.006	.008	.514	5.950
September	1.854	1.616	.989	.198	4.656	.663	.189	.223	.028	.005	.009	.455	5.774
October	1.928	1.671	1.013	.211	4.822	.625	.189	.230	.028	.005	.009	.462	5.910
November	1.727	1.597	.968	.206	4.498	.621	.202	.230	.027	.005	.010	.474	5.593
December	1.889	1.649	1.003	.200	4.741	.715	.246	.246	.030	.005	.011	.538	5.994
Total	21.970	19.691	12.026	2.346	56.033	7.959	2.825	2.739	.339	.064	.115	6.081	70.072
2004 January	1.913	1.650	1.002	.208	4.773	.738	.230	.245	.030	.005	.010	.521	R 6.032
February	1.772	1.530	.935	.194	4.431	.668	.210	.228	.029	.005	.010	.481	5.580
March	1.941	1.665	1.008	.211	4.825	.660	.230	.238	.029	.005	.013	.515	6.000
April	1.877	1.604	.962	.199	4.642	.611	.209	.238	.028	.005	.013	.493	5.746
May	1.784	1.635	.998	.206	4.622	.677	.241	.234	.029	.006	.017	.526	5.825
June	1.942	1.593	.939	.194	4.669	.706	.253	.237	.029	.006	.014	.538	5.913
July	1.888	1.643	.981	.209	4.721	.750	.234	.247	.030	.006	.012	.528	6.000
August	1.948	1.636	.959	.215	4.758	.741	.216	.244	.030	.006	.011	.506	6.005
September	1.913	1.522	.881	.201	4.517	.687	.206	.233	.028	.005	.011	.483	5.688
October	1.895	1.606	.927	.210	4.638	.652	.189	.243	.030	.005	.010	.478	5.768
November	1.888	1.566	.939	.209	4.601	.615	.210	.237	.029	.005	.009	.490	5.705
December	1.953	1.613	.973	.210	4.749	.715	.263	.254	.030	.005	.012	.563	6.028
Total	22.714	19.264	11.503	2.466	55.946	8.222	2.690	2.879	.349	.063	.142	6.123	70.292
2005 January	R 1.918	RE 1.642	E .970	.209	R 4.738	.728	.244	.234	.030	.005	.009	.523	R 5.989
February	R 1.840	RE 1.499	E .888	.194	R 4.421	.635	.218	.219	.026	.005	.008	.476	R 5.532
March	R 2.090	RE 1.648	E .988	.215	R 4.941	.641	.232	.228	.029	.005	.013	.507	R 6.089
April	R 1.908	RE 1.586	E .955	.204	R 4.654	.571	.229	.219	.029	.005	.014	.497	R 5.721
May	R 1.844	RE 1.616	E .988	.213	R 4.661	.656	.273	.227	.031	.006	.015	.551	R 5.868
June	R 1.951	RE 1.586	E .944	.199	R 4.681	.689	.268	.225	.030	.006	.016	.545	R 5.916
July	R 1.880	RE 1.601	E .943	.202	R 4.625	.737	.261	.235	.031	.006	.012	.544	R 5.907
August	R 2.003	RE 1.607	E .948	.198	R 4.756	.740	.216	.236	.030	.006	.009	.498	R 5.993
September	R 1.958	RE 1.391	E .733	.165	R 4.246	.695	.175	.223	.030	.005	.013	.446	R 5.388
October	R 1.914	RE 1.470	E .764	.177	R 4.326	.638	.181	.226	.030	.005	.013	.455	R 5.419
November	R 1.941	E 1.448	E .824	.181	R 4.395	.656	.193	.224	.029	.005	.014	.465	R 5.516
December	1.898	E 1.564	E .894	.168	4.524	.748	.223	.234	.030	.005	.013	.504	5.776
Total	23.146	E 18.659	E 10.840	2.323	54.968	8.133	2.715	2.729	.356	.063	.149	6.012	69.113

<sup>a</sup> End-use consumption and electricity net generation.

<sup>b</sup> Includes lease condensate.

<sup>c</sup> Natural gas plant liquids.

<sup>d</sup> Conventional hydroelectric power.

<sup>e</sup> Wood, waste, and alcohol fuels (ethanol blended into motor gasoline).

R=Revised. E=Estimate. NA=Not available. (s)=Less than 0.5 trillion Btu.

Notes: • See Note 1, "Energy Production," at end of section. • Totals may not equal sum of components due to independent rounding. • Geographic

coverage is the 50 States and the District of Columbia.

Web Page: For annual data not displayed between 1973 and 1995, see <http://www.eia.doe.gov/emeu/mer/overview.html>.

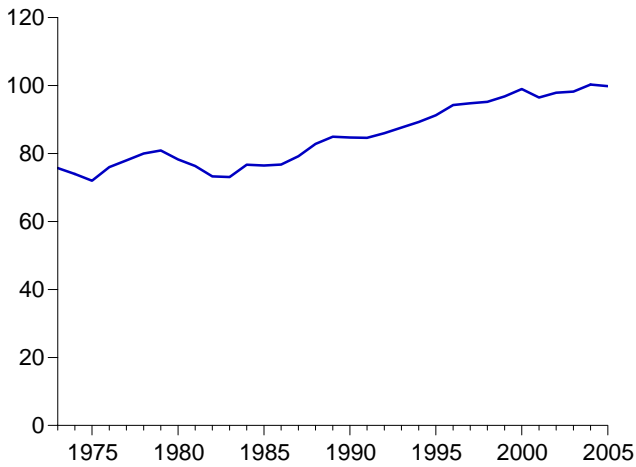
Sources: • Coal: Tables 6.1 and A5. • Natural Gas (Dry): Tables 4.1 and A4. • Crude Oil and Natural Gas Plant Liquids: Tables 3.1a and A2.

• Nuclear Electric Power: Tables 7.2a and A6 ("Nuclear Plants" heat rate).

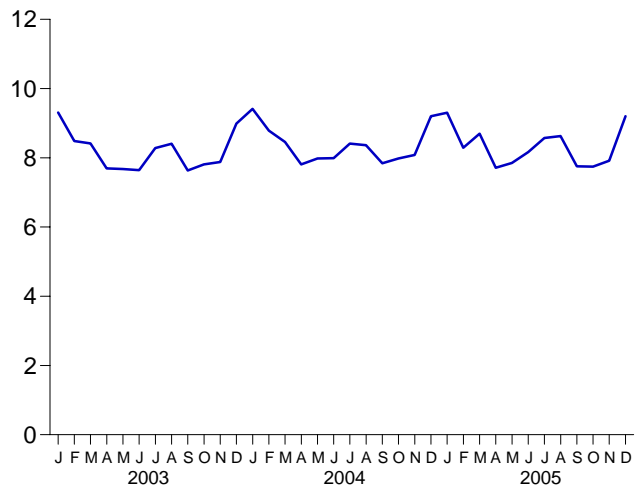
• Renewable Energy: Table 10.1.

**Figure 1.3 Energy Consumption**  
(Quadrillion Btu)

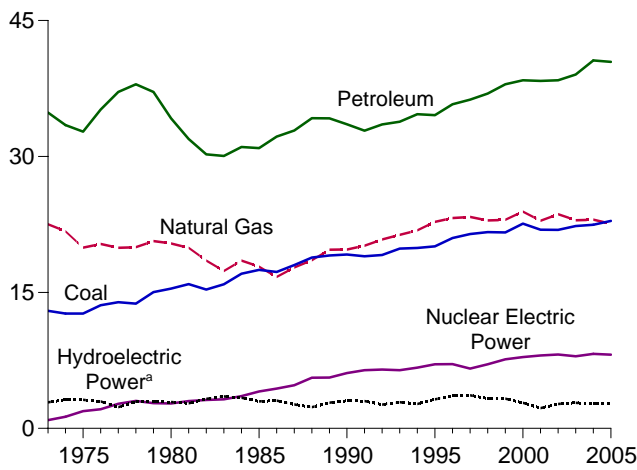
Total, 1973-2005



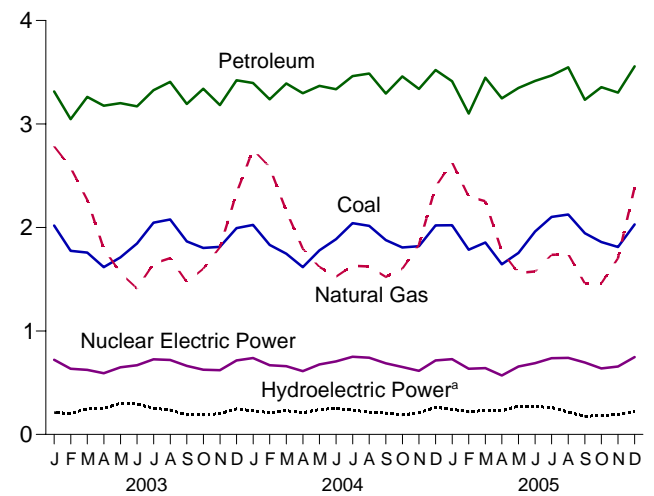
Total, Monthly



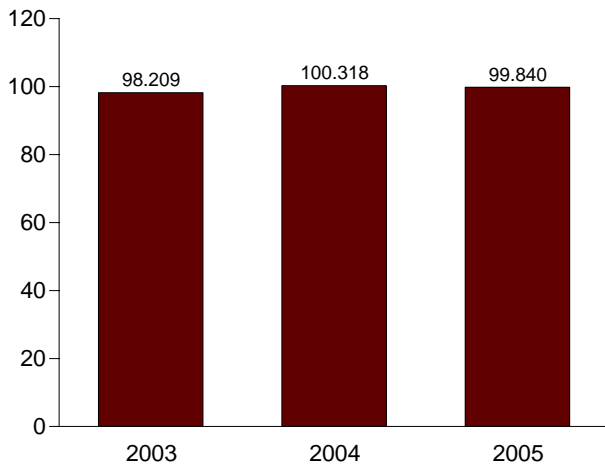
By Major Sources, 1973-2005



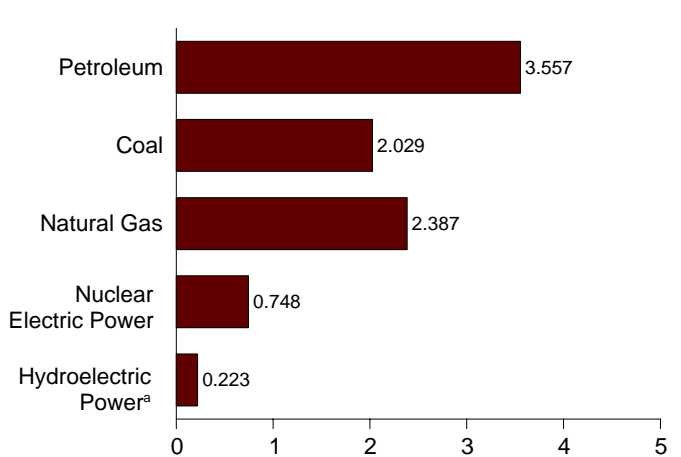
By Major Sources, Monthly



Total, January-December



By Major Sources, December 2005



<sup>a</sup>Conventional hydroelectric power.  
Note: Because vertical scales differ, graphs should not be compared.

Web Page: <http://www.eia.doe.gov/emeu/mer/overview.html>.  
Source: Table 1.3.

**Table 1.3 Energy Consumption by Source**  
(Quadrillion Btu)

	Fossil Fuels				Nuclear Electric Power	Renewable Energy <sup>a</sup>						Total <sup>d,h</sup>
	Coal	Natural Gas <sup>b</sup>	Petro-leum <sup>c,d</sup>	Total <sup>e</sup>		Hydro-electric Power <sup>f</sup>	Bio-mass <sup>d,g</sup>	Geo-thermal	Solar	Wind	Total	
<b>1973 Total</b> .....	12.971	22.512	34.840	70.316	0.910	2.861	1.529	0.043	NA	NA	4.433	75.708
<b>1975 Total</b> .....	12.663	19.948	32.731	65.355	1.900	3.155	1.499	.070	NA	NA	4.723	71.999
<b>1980 Total</b> .....	15.423	20.394	34.202	69.984	2.739	2.900	2.485	.110	NA	NA	5.494	78.289
<b>1985 Total</b> .....	17.478	17.834	30.922	66.221	4.076	2.970	2.864	.198	(s)	(s)	6.033	76.469
<b>1990 Total</b> .....	19.173	19.730	33.553	72.460	6.104	3.046	2.662	.336	.060	.029	6.133	84.704
<b>1995 Total</b> .....	20.089	22.784	34.553	77.488	7.075	3.205	3.068	.294	.070	.033	6.669	91.250
<b>1996 Total</b> .....	21.002	23.197	35.757	79.979	7.087	3.590	3.127	.316	.071	.033	7.137	94.256
<b>1997 Total</b> .....	21.445	23.328	36.266	81.086	6.597	3.640	3.006	.325	.070	.034	7.075	94.768
<b>1998 Total</b> .....	21.656	22.936	36.934	81.592	7.068	3.297	2.835	.328	.070	.031	6.561	95.192
<b>1999 Total</b> .....	21.623	23.010	37.960	82.650	7.610	3.268	2.885	.331	.069	.046	6.599	96.836
<b>2000 Total</b> .....	22.580	23.916	38.404	84.965	7.862	2.811	2.907	.317	.066	.057	6.158	98.961
<b>2001 Total</b> .....	21.914	22.906	38.333	83.182	8.033	2.242	2.640	.311	.065	.070	5.328	96.472
<b>2002 Total</b> .....	21.904	23.628	38.401	83.994	8.143	2.689	2.649	.328	.064	.105	5.836	97.877
<b>2003 January</b> .....	2.019	2.784	3.314	8.118	.721	.211	.229	.029	.005	.006	.481	9.309
February .....	1.774	2.578	3.046	7.412	.635	.203	.211	.027	.005	.008	.452	8.484
March .....	1.757	2.266	3.262	7.289	.625	.248	.226	.029	.005	.011	.518	8.414
April .....	1.617	1.798	3.177	6.595	.592	.254	.224	.027	.005	.011	.521	7.692
May .....	1.710	1.562	3.202	6.476	.648	.301	.225	.028	.006	.010	.570	<sup>R</sup> 7.676
June .....	1.845	1.411	3.171	6.431	.669	.293	.222	.029	.006	.011	.560	7.643
July .....	2.046	1.650	3.326	7.028	.726	.254	.237	.029	.006	.010	.535	8.280
August .....	2.077	1.703	3.408	7.188	.719	.235	.236	.029	.006	.008	.514	8.408
September .....	1.866	1.473	3.193	6.535	.663	.189	.223	.028	.005	.009	.455	7.633
October .....	1.802	1.601	3.341	6.749	.625	.189	.230	.028	.005	.009	.462	7.808
November .....	1.813	1.808	3.184	6.808	.621	.202	.230	.027	.005	.010	.474	7.877
December .....	1.994	2.334	3.423	7.757	.715	.246	.246	.030	.005	.011	.538	8.986
<b>Total</b> .....	<b>22.321</b>	<b>22.967</b>	<b>39.047</b>	<b>84.386</b>	<b>7.959</b>	<b>2.825</b>	<b>2.739</b>	<b>.339</b>	<b>.064</b>	<b>.115</b>	<b>6.081</b>	<b>98.209</b>
<b>2004 January</b> .....	2.025	2.753	3.396	8.178	.738	.230	.245	.030	.005	.010	.521	9.414
February .....	1.831	2.582	3.238	7.661	.668	.210	.228	.029	.005	.010	.481	8.786
March .....	1.746	2.160	3.392	7.308	.660	.230	.238	.029	.005	.013	.515	8.456
April .....	1.616	1.794	3.297	6.731	.611	.209	.238	.028	.005	.013	.493	7.811
May .....	1.779	1.618	3.369	6.804	.677	.241	.234	.029	.006	.017	.526	7.982
June .....	1.886	1.526	3.335	6.768	.706	.253	.237	.029	.006	.014	.538	7.988
July .....	2.042	1.630	3.463	7.145	.750	.234	.247	.030	.006	.012	.528	8.410
August .....	2.015	1.623	3.487	7.132	.741	.216	.244	.030	.006	.011	.506	8.366
September .....	1.878	1.523	3.295	6.694	.687	.206	.233	.028	.005	.011	.483	7.843
October .....	1.806	1.601	3.460	6.873	.652	.189	.243	.030	.005	.010	.478	7.980
November .....	1.819	1.833	3.339	6.997	.615	.210	.237	.029	.005	.009	.490	8.081
December .....	2.021	2.394	3.521	7.943	.715	.263	.254	.030	.005	.012	.563	9.200
<b>Total</b> .....	<b>22.466</b>	<b>23.036</b>	<b>40.594</b>	<b>86.233</b>	<b>8.222</b>	<b>2.690</b>	<b>2.879</b>	<b>.349</b>	<b>.063</b>	<b>.142</b>	<b>6.123</b>	<b>100.318</b>
<b>2005 January</b> .....	2.022	<sup>R</sup> 2.630	<sup>R</sup> 3.413	<sup>R</sup> 8.075	.728	.244	.234	.030	.005	.009	.523	<sup>R</sup> 9.304
February .....	1.785	<sup>R</sup> 2.298	<sup>R</sup> 3.101	<sup>R</sup> 7.197	.635	.218	.219	.026	.005	.008	.476	<sup>R</sup> 8.290
March .....	1.855	2.253	<sup>R</sup> 3.447	<sup>R</sup> 7.564	.641	.232	.228	.029	.005	.013	.507	<sup>R</sup> 8.695
April .....	1.644	<sup>R</sup> 1.768	<sup>R</sup> 3.247	<sup>R</sup> 6.665	.571	.229	.219	.029	.005	.014	.497	<sup>R</sup> 7.714
May .....	1.754	1.559	<sup>R</sup> 3.349	<sup>R</sup> 6.667	.656	.273	.227	.031	.006	.015	.551	<sup>R</sup> 7.853
June .....	1.962	<sup>R</sup> 1.575	<sup>R</sup> 3.417	<sup>R</sup> 6.955	.689	.268	.225	.030	.006	.016	.545	<sup>R</sup> 8.166
July .....	2.102	<sup>R</sup> 1.735	<sup>R</sup> 3.469	<sup>R</sup> 7.311	.737	.261	.235	.031	.006	.012	.544	<sup>R</sup> 8.573
August .....	2.125	<sup>R</sup> 1.743	<sup>R</sup> 3.547	<sup>R</sup> 7.411	.740	.216	.236	.030	.006	.009	.498	<sup>R</sup> 8.630
September .....	1.945	<sup>R</sup> 1.459	<sup>R</sup> 3.234	<sup>R</sup> 6.635	.695	.175	.223	.030	.005	.013	.446	<sup>R</sup> 7.756
October .....	<sup>R</sup> 1.859	<sup>R</sup> 1.461	<sup>R</sup> 3.356	<sup>R</sup> 6.675	.638	.181	.226	.030	.005	.013	.455	<sup>R</sup> 7.744
November .....	<sup>R</sup> 1.812	<sup>R</sup> 1.703	<sup>R</sup> 3.304	<sup>R</sup> 6.820	.656	.193	.224	.029	.005	.014	.465	<sup>R</sup> 7.916
December .....	2.029	2.387	3.557	7.973	.748	.223	.234	.030	.005	.013	.504	9.199
<b>Total</b> .....	<b>22.893</b>	<b>22.571</b>	<b>40.441</b>	<b>85.950</b>	<b>8.133</b>	<b>2.715</b>	<b>2.729</b>	<b>.356</b>	<b>.063</b>	<b>.149</b>	<b>6.012</b>	<b>99.840</b>

<sup>a</sup> End-use consumption and electricity net generation.

<sup>b</sup> Natural gas, plus a small amount of supplemental gaseous fuels that cannot be identified separately.

<sup>c</sup> Petroleum products supplied, including natural gas plant liquids and crude oil burned as fuel. Beginning in 1993, also includes ethanol blended into motor gasoline.

<sup>d</sup> Beginning in 1993, ethanol blended into motor gasoline is included in both "Petroleum" and "Biomass," but is counted only once in total consumption.

<sup>e</sup> Includes coal coke net imports. See Table 1.4.

<sup>f</sup> Conventional hydroelectric power.

<sup>g</sup> Wood, waste, and alcohol fuels (ethanol blended into motor gasoline).

<sup>h</sup> Includes coal coke net imports and electricity net imports, which are not

separately displayed. See Table 1.4.

R=Revised. NA=Not available. (s)=Less than 0.5 trillion Btu.

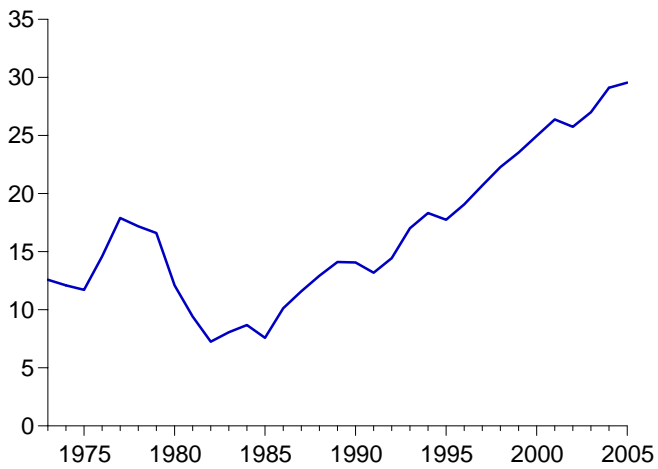
Notes: • See Note 2, "Energy Consumption," at end of section. • Totals may not equal sum of components due to independent rounding. • Geographic coverage is the 50 States and the District of Columbia.

Web Page: For annual data not displayed between 1973 and 1995, see <http://www.eia.doe.gov/emeu/mer/overview.html>.

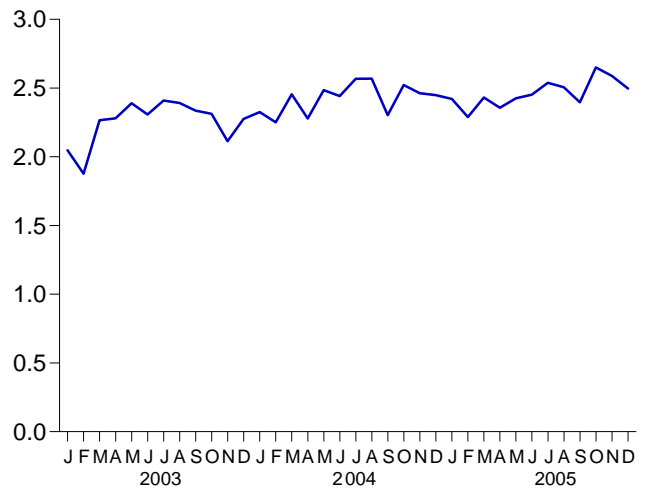
Sources: • **Coal:** Tables 6.1 and A5. • **Natural Gas:** Tables 4.1 and A4 • **Petroleum:** Tables 3.1b and A3. • **Nuclear Electric Power:** Tables 7.2a and A6 ("Nuclear Plants" heat rate). • **Renewable Energy:** Table 10.1. • **Net Imports of Coal Coke and Electricity:** Table 1.4.

**Figure 1.4 Energy Net Imports**  
(Quadrillion Btu, Except as noted)

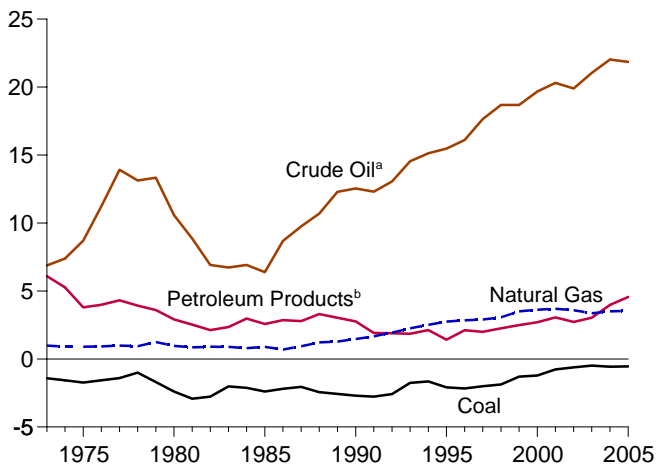
Total, 1973-2005



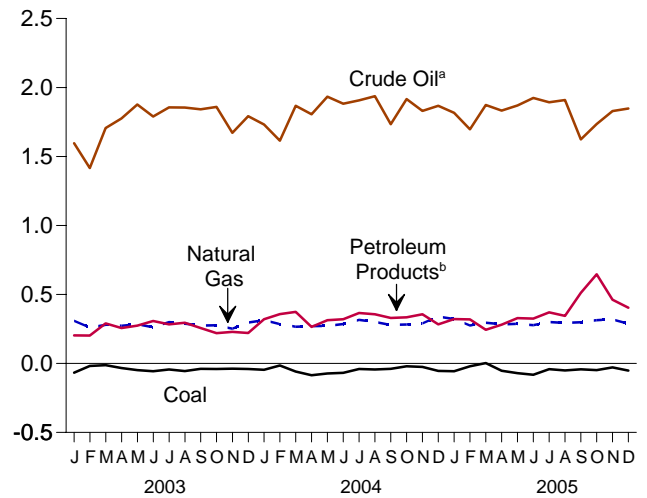
Total, Monthly



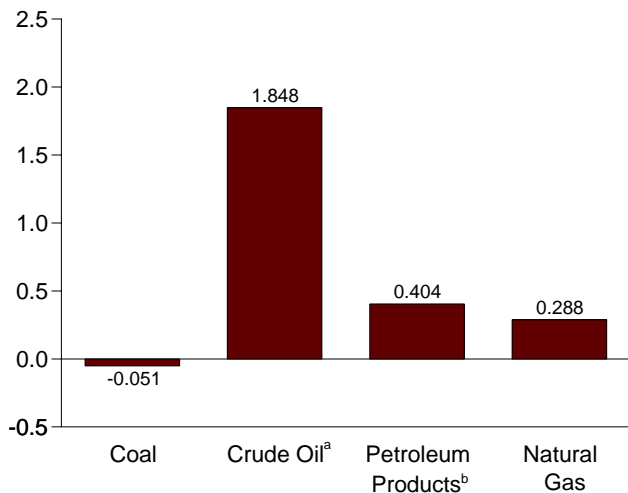
By Major Sources, 1973-2005



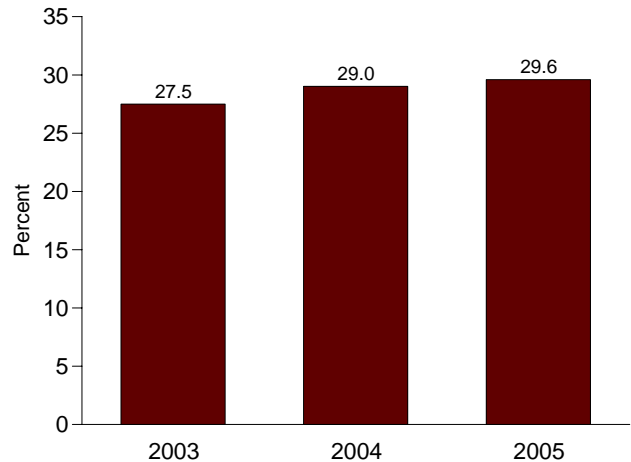
By Major Sources, Monthly



By Major Sources, December 2005



As Share of Consumption, January-December



<sup>a</sup>Crude oil and lease condensate. Includes imports into the Strategic Petroleum Reserve, which began in 1977.

<sup>b</sup>Petroleum products, unfinished oils, pentanes plus, and gasoline blending components.

Note: Because vertical scales differ, graphs should not be compared.  
Web Page: <http://www.eia.doe.gov/emeu/mer/overview.html>.  
Sources: Tables 1.3 and 1.4.



**Table 1.4 Energy Net Imports by Source**  
(Quadrillion Btu)

	Coal	Coal Coke	Natural Gas	Crude Oil <sup>a</sup>	Petroleum Products <sup>b</sup>	Electricity	Total
<b>1973 Total</b> .....	-1.422	-0.007	0.981	6.883	6.097	0.049	12.580
<b>1975 Total</b> .....	-1.738	.014	.904	8.708	3.800	.021	11.709
<b>1980 Total</b> .....	-2.391	-.035	.957	10.586	2.912	.071	12.101
<b>1985 Total</b> .....	-2.389	-.013	.896	6.381	2.570	.140	7.584
<b>1990 Total</b> .....	-2.705	.005	1.464	12.536	2.757	.008	14.065
<b>1995 Total</b> .....	-2.081	.061	2.745	15.469	1.422	.134	17.750
<b>1996 Total</b> .....	-2.165	.023	2.847	16.108	2.119	.137	19.069
<b>1997 Total</b> .....	-2.006	.046	2.904	17.648	1.993	.116	20.701
<b>1998 Total</b> .....	-1.874	.067	3.064	18.684	2.252	.088	22.281
<b>1999 Total</b> .....	-1.298	.058	3.500	18.686	2.493	.099	23.537
<b>2000 Total</b> .....	-1.215	.065	3.623	19.676	2.701	.115	24.967
<b>2001 Total</b> .....	-.771	.029	3.691	20.305	3.056	.075	26.386
<b>2002 Total</b> .....	-.610	.061	3.583	19.901	2.732	.078	25.745
<b>2003</b>							
January .....	-.067	.001	.309	1.596	.203	.005	2.047
February .....	-.018	.013	.260	1.416	.202	.004	1.877
March .....	-.012	.004	.280	1.706	.290	-.001	2.266
April .....	-.033	.004	.273	1.776	.257	.003	2.280
May .....	-.048	.002	.284	1.876	.274	.001	2.389
June .....	-.057	.004	.262	1.790	.308	.001	2.308
July .....	-.044	.005	.300	1.856	.283	.010	2.409
August .....	-.055	.001	.288	1.854	.295	.008	2.392
September .....	-.039	.004	.275	1.842	.256	-.002	2.336
October .....	-.040	.004	.276	1.860	.219	-.006	2.313
November .....	-.038	.003	.252	1.671	.228	-.003	2.114
December .....	-.040	.006	.296	1.792	.221	.001	2.275
<b>Total</b> .....	<b>-.491</b>	<b>.051</b>	<b>3.356</b>	<b>21.034</b>	<b>3.035</b>	<b>.022</b>	<b>27.007</b>
<b>2004</b>							
January .....	-.046	.004	.315	1.732	.320	(s)	2.325
February .....	-.015	.009	.284	1.615	.357	(s)	2.250
March .....	-.059	.010	.266	1.867	.374	-.003	2.455
April .....	-.086	.024	.271	1.805	.265	(s)	2.279
May .....	-.072	.037	.273	1.933	.313	.001	2.485
June .....	-.069	.020	.286	1.882	.320	.002	2.442
July .....	-.040	.009	.316	1.906	.366	.010	2.568
August .....	-.044	.007	.301	1.937	.356	.012	2.569
September .....	-.040	-.002	.278	1.734	.329	.003	2.303
October .....	-.021	.006	.282	1.917	.334	.004	2.522
November .....	-.026	.006	.291	1.830	.357	.005	2.462
December .....	-.055	.008	.340	1.867	.283	.005	2.449
<b>Total</b> .....	<b>-.571</b>	<b>.138</b>	<b>3.503</b>	<b>22.025</b>	<b>3.976</b>	<b>.039</b>	<b>29.110</b>
<b>2005</b>							
January .....	-.056	.011	E .322	R 1.817	.322	.005	R 2.420
February .....	-.021	.013	E .276	R 1.696	.319	.006	R 2.289
March .....	.002	.009	E .294	R 1.873	.244	.008	R 2.431
April .....	-.053	.006	E .283	R 1.832	.281	.006	R 2.357
May .....	-.071	.005	E .287	R 1.870	.329	.005	R 2.425
June .....	-.082	.001	E .278	R 1.924	.325	.005	R 2.452
July .....	-.041	.005	E .301	R 1.893	.370	.010	R 2.538
August .....	-.050	-.004	E .294	R 1.910	.344	.012	R 2.506
September .....	-.042	-.003	E .298	R 1.624	.512	.007	R 2.396
October .....	-.049	-.001	E .313	R 1.735	.646	.006	R 2.650
November .....	-.029	.001	RE .319	R 1.829	.462	R .006	R 2.589
December .....	-.051	(s)	E .288	1.848	.404	.007	2.497
<b>Total</b> .....	<b>-.542</b>	<b>.044</b>	<b>E 3.555</b>	<b>21.850</b>	<b>4.560</b>	<b>.084</b>	<b>29.551</b>

<sup>a</sup> Crude oil and lease condensate. Includes imports into the Strategic Petroleum Reserve, which began in 1977.

<sup>b</sup> Petroleum products, unfinished oils, pentanes plus, and gasoline blending components.

R=Revised. E=Estimate. (s)=Less than +0.5 trillion Btu and greater than -0.5 trillion Btu.

Notes: • See Note 3, "Energy Imports," and 4, "Energy Exports," at end of section. • Net imports equal imports minus exports. Minus sign indicates exports are greater than imports. • Totals may not equal sum of components due to

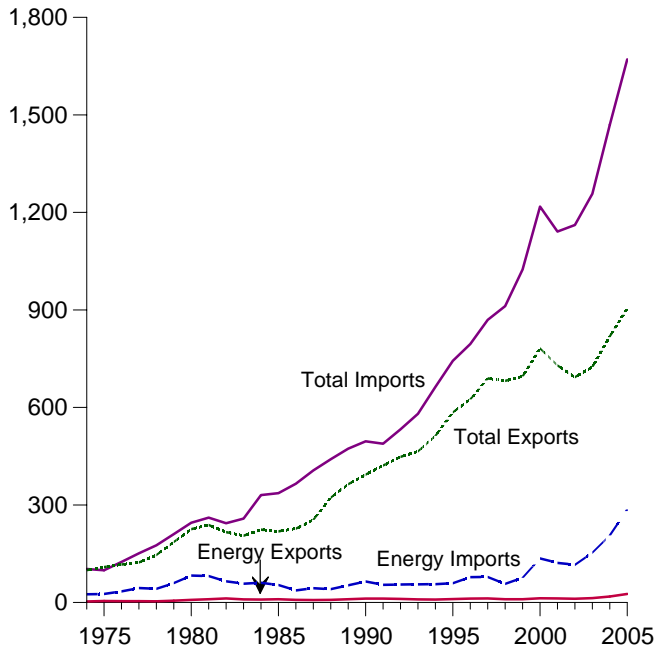
independent rounding. • Geographic coverage is the 50 States and the District of Columbia.

Web Page: For annual data not displayed between 1973 and 1995, see <http://www.eia.doe.gov/emeu/mer/overview.html>.

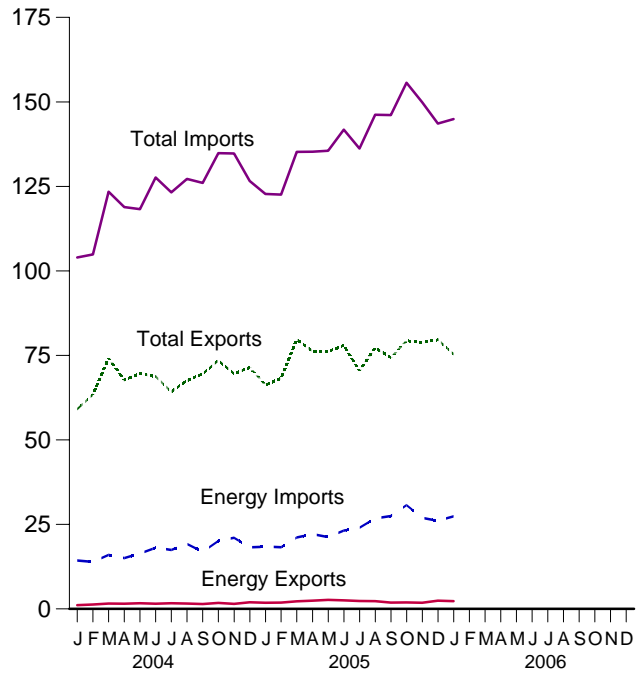
Sources: • **Coal:** Tables 6.1 and A5. • **Coal Coke:** Section 2, "Energy Consumption Notes and Sources," Note 5, and Table A5. • **Natural Gas:** Tables 4.1 and A4. • **Crude Oil and Petroleum Products:** Tables 3.1a, 3.1b, A2, and A3. • **Electricity:** Tables 7.1 and A6.

**Figure 1.5 Merchandise Trade Value**  
(Billion Dollars)

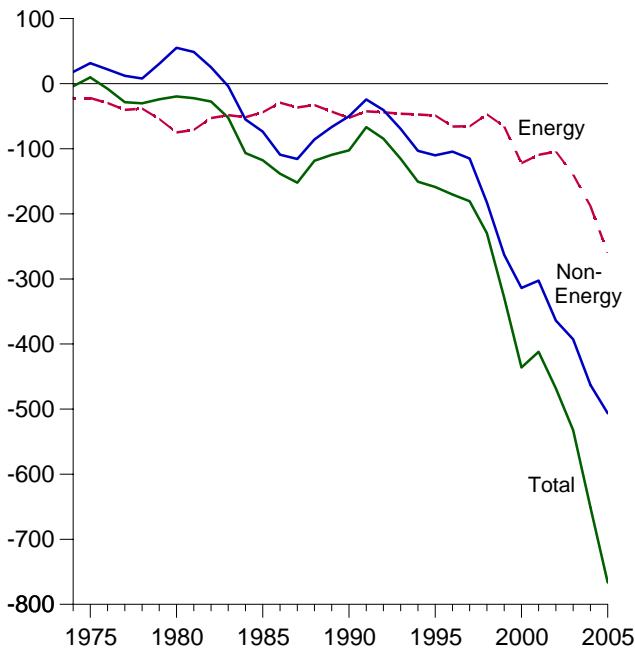
Imports and Exports, 1974-2005



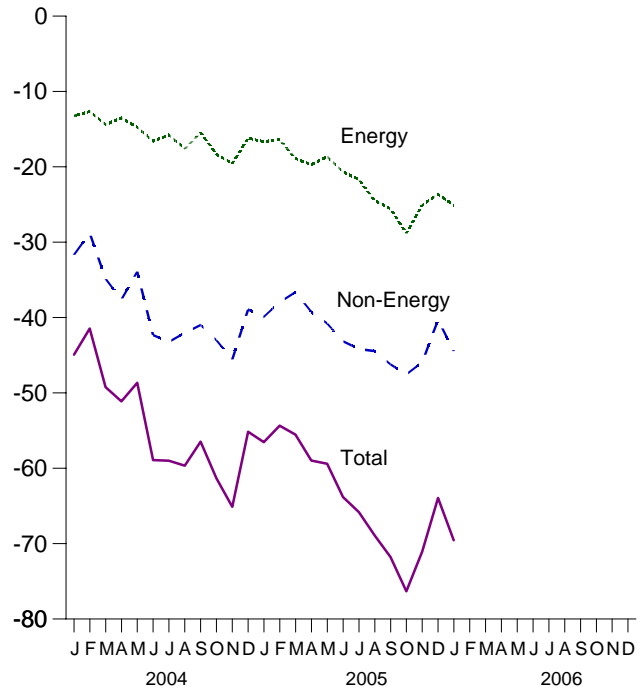
Imports and Exports, Monthly



Trade Balance, 1974-2005



Trade Balance, Monthly



Note: Because vertical scales differ, graphs should not be compared.  
Web Page: <http://www.eia.doe.gov/emeu/mer/overview.html>.  
Source: Table 1.5.

**Table 1.5 Merchandise Trade Value**  
(Million Dollars)

	Petroleum <sup>a</sup>			Energy <sup>b</sup>			Non-Energy Balance	Total Merchandise		
	Exports	Imports	Balance	Exports	Imports	Balance		Exports	Imports	Balance
<b>1974 Total</b> .....	792	24,668	-23,876	3,444	25,454	-22,010	18,126	99,437	103,321	-3,884
<b>1975 Total</b> .....	907	25,197	-24,289	4,470	26,476	-22,006	31,557	108,856	99,305	9,551
<b>1980 Total</b> .....	2,833	78,637	-75,803	7,982	82,924	-74,942	55,246	225,566	245,262	-19,696
<b>1985 Total</b> .....	4,707	50,475	-45,768	9,971	53,917	-43,946	-73,765	218,815	336,526	-117,712
<b>1990 Total</b> .....	6,901	61,583	-54,682	12,233	64,661	-52,428	-50,068	393,592	496,088	-102,496
<b>1995 Total</b> .....	6,321	54,368	-48,047	10,358	59,109	-48,751	-110,050	584,742	743,543	-158,801
<b>1996 Total</b> .....	7,984	72,022	-64,038	12,181	78,086	-65,905	-104,309	625,075	795,289	-170,214
<b>1997 Total</b> .....	8,592	71,152	-62,560	12,682	78,277	-65,595	-114,927	689,182	869,704	-180,522
<b>1998 Total</b> .....	6,574	50,264	-43,690	10,251	57,323	-47,072	-182,686	682,138	911,896	-229,758
<b>1999 Total</b> .....	7,118	67,173	-60,055	9,880	75,803	-65,923	-262,898	695,797	1,024,618	-328,821
<b>2000 Total</b> .....	10,192	119,251	-109,059	13,179	135,367	-122,188	-313,916	781,918	1,218,022	-436,104
<b>2001 Total</b> .....	8,868	102,747	-93,879	12,494	121,923	-109,429	-302,470	729,100	1,140,999	-411,899
<b>2002 Total</b> .....	8,569	102,663	-94,094	11,541	115,748	-104,207	-364,056	693,103	1,161,366	-468,263
<b>2003</b> January .....	1,028	10,435	-9,407	1,302	12,129	-10,827	-31,810	54,854	97,491	-42,637
February .....	983	10,258	-9,275	1,331	12,018	-10,687	-26,550	55,917	93,154	-37,237
March .....	991	12,634	-11,643	1,467	15,086	-13,619	-28,699	63,524	105,842	-42,318
April .....	868	11,095	-10,227	1,111	12,796	-11,685	-33,022	59,162	103,869	-44,707
May .....	837	10,399	-9,562	1,072	12,030	-10,958	-31,127	59,983	102,068	-42,085
June .....	834	10,790	-9,956	1,163	12,460	-11,297	-31,090	61,570	103,958	-42,387
July .....	787	11,844	-11,057	1,060	13,732	-12,672	-37,889	57,070	107,631	-50,561
August .....	748	11,595	-10,847	969	13,300	-12,331	-31,365	58,611	102,307	-43,696
September .....	783	10,958	-10,175	1,049	12,506	-11,457	-36,626	60,239	108,322	-48,083
October .....	782	11,134	-10,352	1,048	12,655	-11,607	-39,162	66,389	117,158	-50,769
November .....	692	10,189	-9,497	930	11,630	-10,700	-30,875	64,492	106,066	-41,575
December .....	876	11,102	-10,226	1,266	12,956	-11,690	-34,606	62,959	109,255	-46,296
<b>Total</b> .....	<b>10,209</b>	<b>132,433</b>	<b>-122,224</b>	<b>13,768</b>	<b>153,298</b>	<b>-139,530</b>	<b>-392,820</b>	<b>724,771</b>	<b>1,257,121</b>	<b>-532,350</b>
<b>2004</b> January .....	718	11,926	-11,208	1,097	14,339	-13,242	-31,668	59,083	103,993	-44,910
February .....	908	11,714	-10,806	1,286	13,928	-12,642	-28,804	63,418	104,864	-41,446
March .....	1,079	13,953	-12,874	1,580	15,956	-14,376	-34,850	74,195	123,421	-49,226
April .....	989	13,046	-12,057	1,529	15,032	-13,503	-37,612	67,770	118,885	-51,115
May .....	1,143	14,246	-13,103	1,666	16,412	-14,746	-33,910	69,615	118,271	-48,656
June .....	1,014	15,573	-14,559	1,536	18,123	-16,587	-42,323	68,747	127,657	-58,910
July .....	1,070	14,857	-13,787	1,668	17,434	-15,766	-43,218	64,240	123,224	-58,984
August .....	1,200	16,863	-15,663	1,572	19,187	-17,615	-42,031	67,571	127,216	-59,646
September .....	1,108	14,986	-13,878	1,463	16,929	-15,466	-40,995	69,561	126,022	-56,461
October .....	1,299	18,056	-16,757	1,752	20,078	-18,326	-43,000	73,490	134,816	-61,326
November .....	1,162	18,351	-17,189	1,507	21,049	-19,542	-45,564	69,613	134,719	-65,106
December .....	1,438	15,695	-14,257	1,988	18,194	-16,206	-38,938	71,473	126,617	-55,144
<b>Total</b> .....	<b>13,130</b>	<b>179,266</b>	<b>-166,136</b>	<b>18,642</b>	<b>206,660</b>	<b>-188,018</b>	<b>-462,912</b>	<b>818,775</b>	<b>1,469,704</b>	<b>-650,930</b>
<b>2005</b> January .....	1,049	15,631	-14,582	1,804	18,430	-16,626	-39,912	66,237	122,775	-56,538
February .....	1,445	15,430	-13,985	1,860	18,247	-16,387	-37,956	68,238	122,580	-54,343
March .....	1,731	18,360	-16,629	2,267	21,152	-18,885	-36,640	79,713	135,238	-55,525
April .....	1,766	19,466	-17,700	2,415	22,134	-19,719	-39,252	76,286	135,257	-58,971
May .....	1,901	19,169	-17,268	2,656	21,284	-18,628	-40,769	76,144	135,541	-59,397
June .....	1,832	20,468	-18,636	2,511	23,172	-20,661	-43,145	77,969	141,775	-63,806
July .....	1,808	21,545	-19,737	2,351	24,017	-21,666	-44,141	70,391	136,198	-65,807
August .....	1,816	23,803	-21,987	2,319	26,768	-24,449	-44,447	77,287	146,183	-68,896
September .....	1,319	23,842	-22,523	1,888	27,459	-25,571	-46,206	74,325	146,102	-71,777
October .....	1,302	26,776	-25,474	1,911	30,710	-28,799	-47,527	79,319	155,645	-76,326
November .....	1,413	23,355	-21,942	1,826	26,941	-25,115	-45,937	78,814	149,866	-71,052
December .....	1,613	21,941	-20,328	2,431	26,060	-23,629	<sup>R</sup> -40,302	<sup>R</sup> 79,660	<sup>R</sup> 143,591	<sup>R</sup> -63,931
<b>Total</b> .....	<b>18,998</b>	<b>249,781</b>	<b>-230,783</b>	<b>26,240</b>	<b>286,375</b>	<b>-260,135</b>	<sup>R</sup> <b>-506,232</b>	<sup>R</sup> <b>904,383</b>	<sup>R</sup> <b>1,670,751</b>	<sup>R</sup> <b>-766,367</b>
<b>2006</b> January .....	1,732	23,220	-21,488	2,300	27,399	-25,099	-44,455	75,365	144,920	-69,554

<sup>a</sup> Crude oil, petroleum preparations, liquefied propane and butane, and other mineral fuels.

<sup>b</sup> Petroleum, coal, natural gas, and electricity.

R=Revised.

Notes: • Monthly data are not adjusted for seasonal variations. • See Note 5 at end of section. • Totals may not equal sum of components due to independent rounding. • The U.S. import statistics reflect both government and

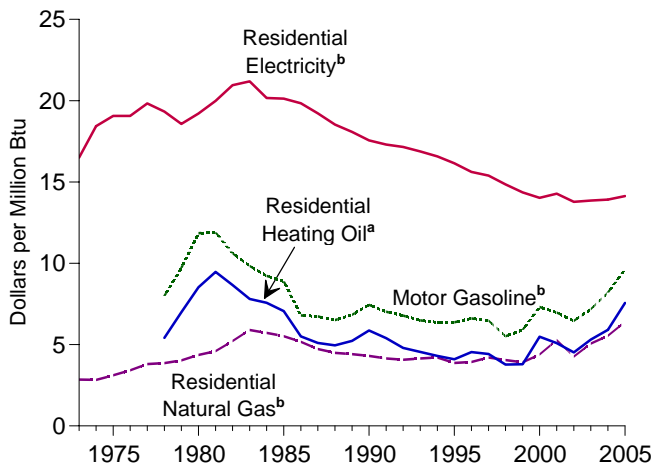
nongovernment imports of merchandise from foreign countries into the U.S. customs territory, which comprises the 50 States, the District of Columbia, Puerto Rico, and the Virgin Islands.

Web Page: For annual data not displayed between 1975 and 1995, see <http://www.eia.doe.gov/emeu/mer/overview.html>.

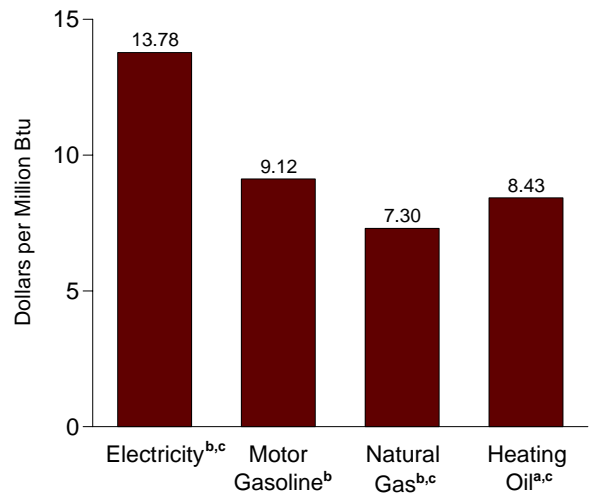
Source: U.S. Department of Commerce, Bureau of the Census, Foreign Trade Division. For details, see "Table 1.5 Sources" at the end of this section.

**Figure 1.6 Cost of Fuels to End Users in Constant (1982-1984) Dollars**

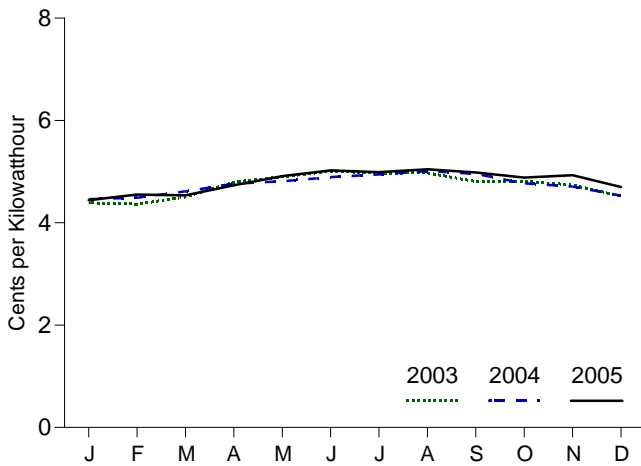
Costs, 1973-2005



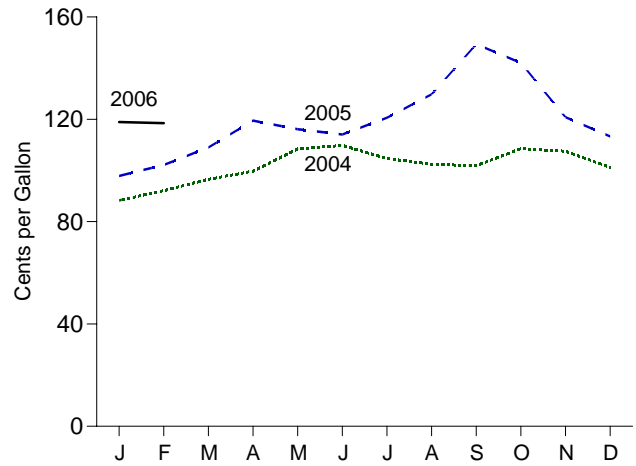
Costs, December 2005



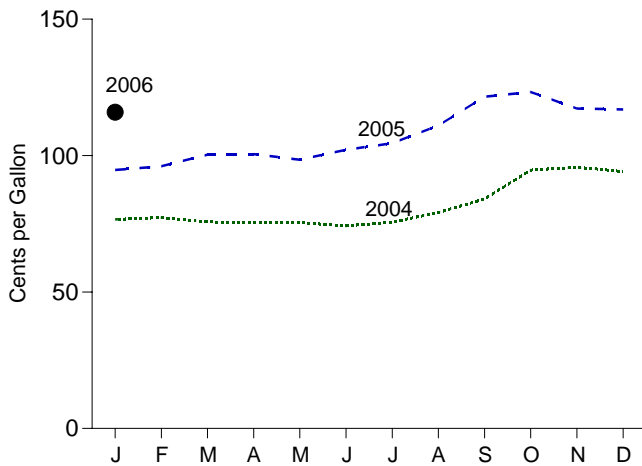
Residential Electricity<sup>b</sup>, Monthly



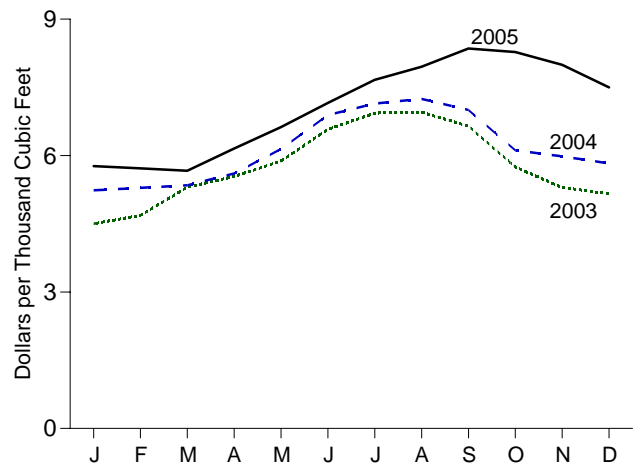
Motor Gasoline<sup>b</sup>, Monthly



Residential Heating Oil<sup>a</sup>, Monthly



Residential Natural Gas<sup>b</sup>, Monthly



<sup>a</sup>Excludes taxes.

<sup>b</sup>Includes taxes.

<sup>c</sup>Residential.

Note: Because vertical scales differ, graphs should not be compared.

Web Page: <http://www.eia.doe.gov/emeu/mer/overview.html>.

Source: Table 1.6.

**Table 1.6 Cost of Fuels to End Users in Constant (1982-1984) Dollars**

	Consumer Price Index (Urban) <sup>a</sup>	Motor Gasoline <sup>b</sup>		Residential Heating Oil <sup>c</sup>		Residential Natural Gas <sup>b</sup>		Residential Electricity <sup>b</sup>	
	Index 1982-1984=100	Cents per Gallon	Dollars per Million Btu	Cents per Gallon	Dollars per Million Btu	Cents per Thousand Cubic Feet	Dollars per Million Btu	Cents per Kilowatt-hour	Dollars per Million Btu
<b>1973 Average</b> .....	<b>44.4</b>	<b>NA</b>	<b>NA</b>	<b>NA</b>	<b>NA</b>	<b>290.5</b>	<b>2.85</b>	<b>5.6</b>	<b>16.50</b>
<b>1975 Average</b> .....	<b>53.8</b>	<b>NA</b>	<b>NA</b>	<b>NA</b>	<b>NA</b>	<b>317.8</b>	<b>3.12</b>	<b>6.5</b>	<b>19.07</b>
<b>1980 Average</b> .....	<b>82.4</b>	<b>148.2</b>	<b>11.85</b>	<b>118.2</b>	<b>8.52</b>	<b>446.6</b>	<b>4.36</b>	<b>6.6</b>	<b>19.21</b>
<b>1985 Average</b> .....	<b>107.6</b>	<b>111.2</b>	<b>8.89</b>	<b>97.9</b>	<b>7.06</b>	<b>568.8</b>	<b>5.52</b>	<b>6.87</b>	<b>20.13</b>
<b>1990 Average</b> .....	<b>130.7</b>	<b>93.1</b>	<b>7.44</b>	<b>81.3</b>	<b>5.86</b>	<b>443.8</b>	<b>4.31</b>	<b>5.99</b>	<b>17.56</b>
<b>1995 Average</b> .....	<b>152.4</b>	<b>79.1</b>	<b>6.37</b>	<b>56.9</b>	<b>4.10</b>	<b>397.6</b>	<b>3.87</b>	<b>5.51</b>	<b>16.15</b>
<b>1996 Average</b> .....	<b>156.9</b>	<b>82.1</b>	<b>6.61</b>	<b>63.0</b>	<b>4.54</b>	<b>404.1</b>	<b>3.93</b>	<b>5.33</b>	<b>15.62</b>
<b>1997 Average</b> .....	<b>160.5</b>	<b>80.4</b>	<b>6.48</b>	<b>61.3</b>	<b>4.42</b>	<b>432.4</b>	<b>4.21</b>	<b>5.25</b>	<b>15.39</b>
<b>1998 Average</b> .....	<b>163.0</b>	<b>68.4</b>	<b>5.51</b>	<b>52.3</b>	<b>3.77</b>	<b>418.4</b>	<b>4.05</b>	<b>5.07</b>	<b>14.85</b>
<b>1999 Average</b> .....	<b>166.6</b>	<b>73.3</b>	<b>5.91</b>	<b>52.6</b>	<b>3.79</b>	<b>401.6</b>	<b>3.91</b>	<b>4.90</b>	<b>14.36</b>
<b>2000 Average</b> .....	<b>172.2</b>	<b>90.8</b>	<b>7.32</b>	<b>76.1</b>	<b>5.49</b>	<b>450.6</b>	<b>4.39</b>	<b>4.79</b>	<b>14.02</b>
<b>2001 Average</b> .....	<b>177.1</b>	<b>86.4</b>	<b>6.97</b>	<b>70.6</b>	<b>5.09</b>	<b>543.8</b>	<b>5.27</b>	<b>4.87</b>	<b>14.28</b>
<b>2002 Average</b> .....	<b>179.9</b>	<b>80.1</b>	<b>6.46</b>	<b>62.8</b>	<b>4.52</b>	<b>438.6</b>	<b>4.26</b>	<b>4.70</b>	<b>13.78</b>
<b>2003</b>									
January .....	181.7	85.7	6.91	73.3	5.29	450.2	4.36	4.39	12.87
February .....	183.1	92.1	7.43	82.4	5.94	468.6	4.54	4.36	12.79
March .....	184.2	97.2	7.84	83.6	6.02	530.4	5.13	4.51	13.21
April .....	183.8	92.7	7.48	73.2	5.28	553.9	5.36	4.79	14.05
May .....	183.5	86.5	6.98	69.0	4.98	588.0	5.69	4.90	14.36
June .....	183.7	84.8	6.84	66.2	4.78	657.6	6.37	5.01	14.68
July .....	183.9	85.2	6.87	63.3	4.56	693.3	6.71	4.97	14.57
August .....	184.6	90.5	7.30	63.7	4.59	695.6	6.73	4.97	14.57
September .....	185.2	95.6	7.71	64.1	4.63	664.7	6.43	4.81	14.08
October .....	185.0	89.0	7.18	66.8	4.82	575.1	5.57	4.81	14.10
November .....	184.5	85.5	6.90	69.5	5.01	529.5	5.13	4.74	13.88
December .....	184.3	83.5	6.73	72.8	5.25	516.0	5.00	4.52	13.25
<b>Average</b> .....	<b>184.0</b>	<b>89.0</b>	<b>7.18</b>	<b>73.6</b>	<b>5.31</b>	<b>523.4</b>	<b>5.07</b>	<b>4.73</b>	<b>13.86</b>
<b>2004</b>									
January .....	185.2	88.3	7.11	76.6	5.52	523.8	5.10	4.46	13.07
February .....	186.2	92.1	7.42	77.3	5.57	529.0	5.15	4.49	13.16
March .....	187.4	96.5	7.77	75.7	5.46	534.7	5.21	4.62	13.53
April .....	188.0	99.7	8.03	75.4	5.44	560.6	5.46	4.77	13.97
May .....	189.1	108.4	8.73	75.5	5.44	614.5	5.98	4.81	14.10
June .....	189.7	109.8	8.84	74.2	5.35	689.0	6.71	4.89	14.34
July .....	189.4	104.6	8.43	75.6	5.45	714.4	6.96	4.95	14.50
August .....	189.5	102.4	8.25	79.2	5.71	724.5	7.05	5.01	14.69
September .....	189.9	101.8	8.20	84.1	6.06	700.4	6.82	4.96	14.52
October .....	190.9	108.5	8.74	94.7	6.83	611.8	5.96	4.77	13.99
November .....	191.0	107.5	8.66	95.7	6.90	598.4	5.83	4.71	13.79
December .....	190.3	101.2	8.15	94.2	6.79	582.8	5.67	4.53	13.28
<b>Average</b> .....	<b>188.9</b>	<b>101.8</b>	<b>8.20</b>	<b>81.9</b>	<b>5.91</b>	<b>569.1</b>	<b>5.54</b>	<b>4.75</b>	<b>13.92</b>
<b>2005</b>									
January .....	190.7	97.9	7.88	94.8	6.83	576.8	5.62	4.44	13.02
February .....	191.8	102.2	8.23	96.1	6.93	571.9	5.57	4.55	13.34
March .....	193.3	109.0	<sup>R</sup> 8.77	100.3	7.23	566.5	5.52	4.54	13.30
April .....	194.6	119.5	9.62	100.6	7.25	615.6	5.99	4.73	13.87
May .....	194.4	116.1	9.35	98.5	7.10	662.6	6.45	4.91	14.40
June .....	194.5	114.0	9.18	102.1	7.36	715.7	6.97	5.02	14.72
July .....	195.4	120.6	9.71	104.5	7.54	766.6	7.46	4.99	14.62
August .....	196.4	129.7	<sup>R</sup> 10.44	111.0	8.01	795.3	7.74	5.05	14.79
September .....	198.8	149.3	<sup>R</sup> 12.02	121.6	8.77	835.5	8.14	4.98	14.61
October .....	199.2	142.1	11.44	123.3	8.89	827.8	8.06	4.88	14.32
November .....	197.6	120.8	<sup>R</sup> 9.72	<sup>R</sup> 117.3	<sup>R</sup> 8.45	<sup>R</sup> 799.6	<sup>R</sup> 7.79	<sup>R</sup> 4.93	<sup>R</sup> 14.45
December .....	196.8	113.3	<sup>R</sup> 9.12	<sup>R</sup> 116.9	<sup>R</sup> 8.43	<sup>R</sup> 750.0	<sup>R</sup> 7.30	<sup>R</sup> 4.70	<sup>R</sup> 13.78
<b>Average</b> .....	<b>195.3</b>	<b>119.7</b>	<b>9.64</b>	<b><sup>R</sup>104.9</b>	<b><sup>R</sup>7.56</b>	<b><sup>R</sup>656.4</b>	<b><sup>R</sup>6.39</b>	<b><sup>R</sup>4.82</b>	<b><sup>R</sup>14.14</b>
<b>2006</b>									
January .....	198.3	119.0	9.58	<sup>RE</sup> 115.9	<sup>RE</sup> 8.36	NA	NA	NA	NA
February .....	198.7	118.5	9.54	NA	NA	NA	NA	NA	NA

<sup>a</sup> Consumer Price Index, All Urban Consumers, All Items, 1982-1984 = 100.0.

<sup>b</sup> Includes taxes.

<sup>c</sup> Excludes taxes.

R=Revised. E=Estimate. NA=Not available.

Notes: • Fuel costs are calculated by using the Urban Consumer Price Index (CPI) developed by the Bureau of Labor Statistics. • Annual averages may not equal average of months due to independent rounding.

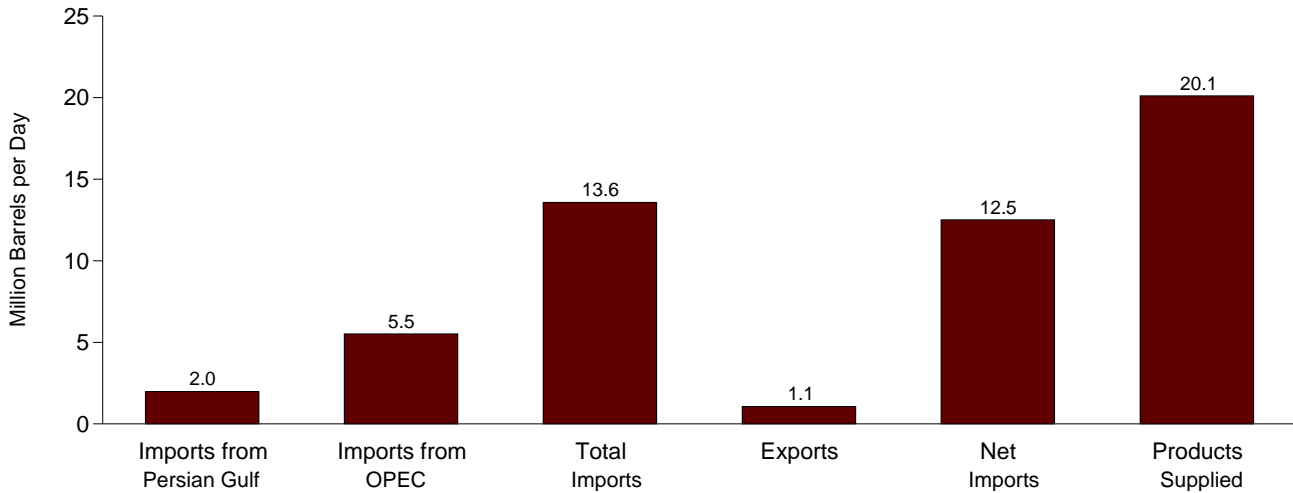
• Geographic coverage is the 50 States and the District of Columbia.

Web Page: For annual data not displayed between 1973 and 1995, see <http://www.eia.doe.gov/emeu/mer/overview.html>.

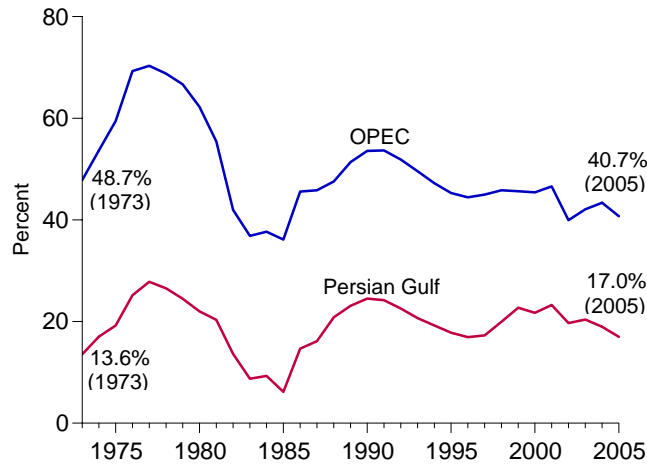
Sources: • **Fuel Prices:** Tables 9.4 (All Types), 9.8c, 9.11, and 9.9, adjusted by the CPI. • **CPI: 1973-2002—Economic Report of the President, February 2006, Table B-60.** • **2003 forward—Council of Economic Advisers, Economic Indicators, March 2006, "Consumer Prices - All Urban Consumers."** • **Conversion Factors:** Tables A1, A3, A4, and A6.

## Figure 1.7 Overview of U.S. Petroleum Trade

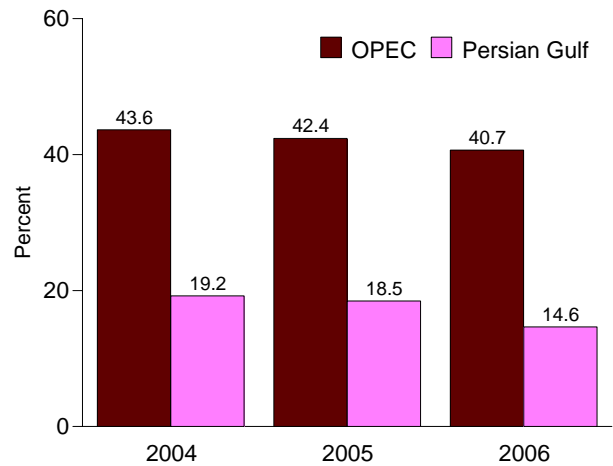
Overview, January 2006



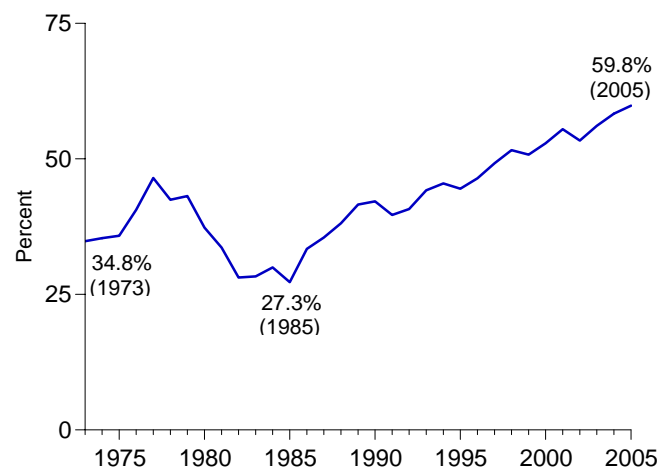
### Imports from OPEC and the Persian Gulf as a Share of Total Imports 1973-2005



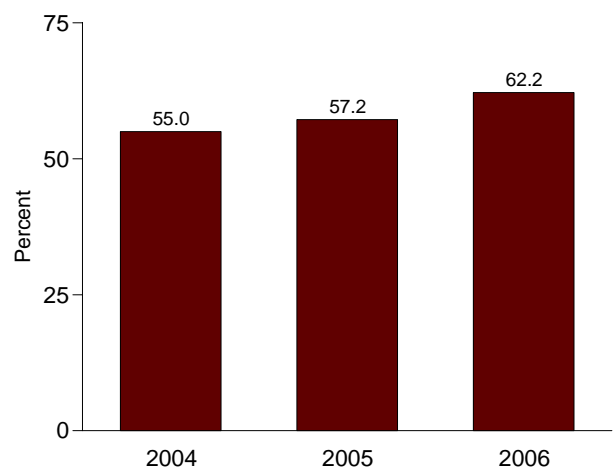
January



### Net Imports as Share of Products Supplied 1973-2005



January



OPEC=Organization of the Petroleum Exporting Countries.  
Note: Because vertical scales differ, graphs should not be compared.

Web Page: <http://www.eia.doe.gov/emeu/mer/overview.html>.  
Source: Table 1.7.

**Table 1.7 Overview of U.S. Petroleum Trade**

	Imports from Persian Gulf <sup>a</sup>	Imports from OPEC <sup>b</sup>	Imports	Exports	Net Imports	Products Supplied	As Share of Products Supplied				As Share of Total Imports	
							Imports from Persian Gulf <sup>a</sup>	Imports from OPEC <sup>b</sup>	Imports	Net Imports	Imports from Persian Gulf <sup>a</sup>	Imports from OPEC <sup>b</sup>
							Thousand Barrels per Day					
<b>1973 Average</b> .....	848	2,993	6,256	231	6,025	17,308	4.9	17.3	36.1	34.8	13.6	47.8
<b>1975 Average</b> .....	1,165	3,601	6,056	209	5,846	16,322	7.1	22.1	37.1	35.8	19.2	59.5
<b>1980 Average</b> .....	1,519	4,300	6,909	544	6,365	17,056	8.9	25.2	40.5	37.3	22.0	62.2
<b>1985 Average</b> .....	311	1,830	5,067	781	4,286	15,726	2.0	11.6	32.2	27.3	6.1	36.1
<b>1990 Average</b> .....	1,966	4,296	8,018	857	7,161	16,988	11.6	25.3	47.2	42.2	24.5	53.6
<b>1995 Average</b> .....	1,573	4,002	8,835	949	7,886	17,725	8.9	22.6	49.8	44.5	17.8	45.3
<b>1996 Average</b> .....	1,604	4,211	9,478	981	8,498	18,309	8.8	23.0	51.8	46.4	16.9	44.4
<b>1997 Average</b> .....	1,755	4,569	10,162	1,003	9,158	18,620	9.4	24.5	54.6	49.2	17.3	45.0
<b>1998 Average</b> .....	2,136	4,905	10,708	945	9,764	18,917	11.3	25.9	56.6	51.6	19.9	45.8
<b>1999 Average</b> .....	2,464	4,953	10,852	940	9,912	19,519	12.6	25.4	55.6	50.8	22.7	45.6
<b>2000 Average</b> .....	2,488	5,203	11,459	1,040	10,419	19,701	12.6	26.4	58.2	52.9	21.7	45.4
<b>2001 Average</b> .....	2,761	5,528	11,871	971	10,900	19,649	14.1	28.1	60.4	55.5	23.3	46.6
<b>2002 Average</b> .....	2,269	4,605	11,530	984	10,546	19,761	11.5	23.3	58.3	53.4	19.7	39.9
<b>2003</b>												
January .....	2,735	4,303	11,104	1,212	9,892	20,017	13.7	21.5	55.5	49.4	24.6	38.8
February .....	2,676	4,052	10,921	1,067	9,854	20,375	13.1	19.9	53.6	48.4	24.5	37.1
March .....	2,818	5,433	12,044	1,051	10,993	19,708	14.3	27.6	61.1	55.8	23.4	45.1
April .....	3,148	5,949	12,599	1,053	11,547	19,830	15.9	30.0	63.5	58.2	25.0	47.2
May .....	2,669	5,751	12,918	1,097	11,822	19,344	13.8	29.7	66.8	61.1	20.7	44.5
June .....	2,327	5,526	13,001	1,065	11,936	19,793	11.8	27.9	65.7	60.3	17.9	42.5
July .....	2,170	4,736	12,736	976	11,760	20,094	10.8	23.6	63.4	58.5	17.0	37.2
August .....	1,849	4,934	12,769	947	11,822	20,586	9.0	24.0	62.0	57.4	14.5	38.6
September .....	2,397	5,394	12,868	960	11,908	19,933	12.0	27.1	64.6	59.7	18.6	41.9
October .....	2,353	5,342	12,373	970	11,402	20,182	11.7	26.5	61.3	56.5	19.0	43.2
November .....	2,586	5,237	11,712	933	10,780	19,873	13.0	26.4	58.9	54.2	22.1	44.7
December .....	2,312	5,225	12,033	990	11,043	20,679	11.2	25.3	58.2	53.4	19.2	43.4
<b>Average</b> .....	<b>2,501</b>	<b>5,162</b>	<b>12,264</b>	<b>1,027</b>	<b>11,238</b>	<b>20,034</b>	<b>12.5</b>	<b>25.8</b>	<b>61.2</b>	<b>56.1</b>	<b>20.4</b>	<b>42.1</b>
<b>2004</b>												
January .....	2,309	5,244	12,014	748	11,266	20,479	11.3	25.6	58.7	55.0	19.2	43.6
February .....	2,108	5,286	12,658	1,046	11,612	20,872	10.1	25.3	60.6	55.6	16.6	41.8
March .....	2,407	5,833	13,349	1,024	12,325	20,453	11.8	28.5	65.3	60.3	18.0	43.7
April .....	2,333	5,593	12,883	1,153	11,730	20,545	11.4	27.2	62.7	57.1	18.1	43.4
May .....	2,485	5,884	13,375	1,052	12,323	20,313	12.2	29.0	65.8	60.7	18.6	44.0
June .....	2,382	5,935	13,561	1,070	12,491	20,780	11.5	28.6	65.3	60.1	17.6	43.8
July .....	2,531	5,845	13,570	1,080	12,490	20,880	12.1	28.0	65.0	59.8	18.6	43.1
August .....	2,928	6,256	13,689	1,091	12,598	21,028	13.9	29.8	65.1	59.9	21.4	45.7
September .....	2,764	5,613	12,676	961	11,715	20,529	13.5	27.3	61.7	57.1	21.8	44.3
October .....	2,562	5,580	13,438	1,078	12,360	20,861	12.3	26.7	64.4	59.2	19.1	41.5
November .....	2,688	5,783	13,409	992	12,417	20,805	12.9	27.8	64.4	59.7	20.0	43.1
December .....	2,402	5,533	13,088	1,284	11,804	21,229	11.3	26.1	61.7	55.6	18.4	42.3
<b>Average</b> .....	<b>2,493</b>	<b>5,701</b>	<b>13,145</b>	<b>1,048</b>	<b>12,097</b>	<b>20,731</b>	<b>12.0</b>	<b>27.5</b>	<b>63.4</b>	<b>58.4</b>	<b>19.0</b>	<b>43.4</b>
<b>2005</b>												
January .....	2,337	5,366	12,661	917	11,745	20,524	11.4	26.1	61.7	57.2	18.5	42.4
February .....	2,291	5,796	13,536	1,259	12,278	20,650	11.1	28.1	65.6	59.5	16.9	42.8
March .....	2,384	5,275	12,919	1,308	11,611	20,732	11.5	25.4	62.3	56.0	18.5	40.8
April .....	2,209	5,532	13,376	1,382	11,994	20,179	10.9	27.4	66.3	59.4	16.5	41.4
May .....	2,355	5,637	13,495	1,401	12,094	20,139	11.7	28.0	67.0	60.1	17.5	41.8
June .....	2,429	5,798	14,262	1,477	12,785	21,232	11.4	27.3	67.2	60.2	17.0	40.7
July .....	2,592	5,957	13,724	1,266	12,458	20,859	12.4	28.6	65.8	59.7	18.9	43.4
August .....	2,171	5,610	13,711	1,314	12,397	21,331	10.2	26.3	64.3	58.1	15.8	40.9
September .....	2,049	4,978	13,055	844	12,211	20,097	10.2	24.8	65.0	60.8	15.7	38.1
October .....	2,295	5,370	14,064	854	13,210	20,184	11.4	26.6	69.7	65.5	16.3	38.2
November .....	2,294	5,370	14,036	982	13,054	20,531	11.2	26.2	68.4	63.6	16.3	38.3
December .....	2,166	5,420	13,506	1,097	12,408	21,393	10.1	25.3	63.1	58.0	16.0	40.1
<b>Average</b> .....	<b>2,298</b>	<b>5,508</b>	<b>13,527</b>	<b>1,174</b>	<b>12,353</b>	<b>20,656</b>	<b>11.1</b>	<b>26.7</b>	<b>65.5</b>	<b>59.8</b>	<b>17.0</b>	<b>40.7</b>
<b>2006</b>												
January .....	1,989	5,522	13,576	1,068	12,508	20,110	9.9	27.5	67.5	62.2	14.6	40.7

<sup>a</sup> Bahrain, Iran, Iraq, Kuwait, Qatar, Saudi Arabia, and the United Arab Emirates.

<sup>b</sup> Organization of the Petroleum Exporting Countries. See Glossary.

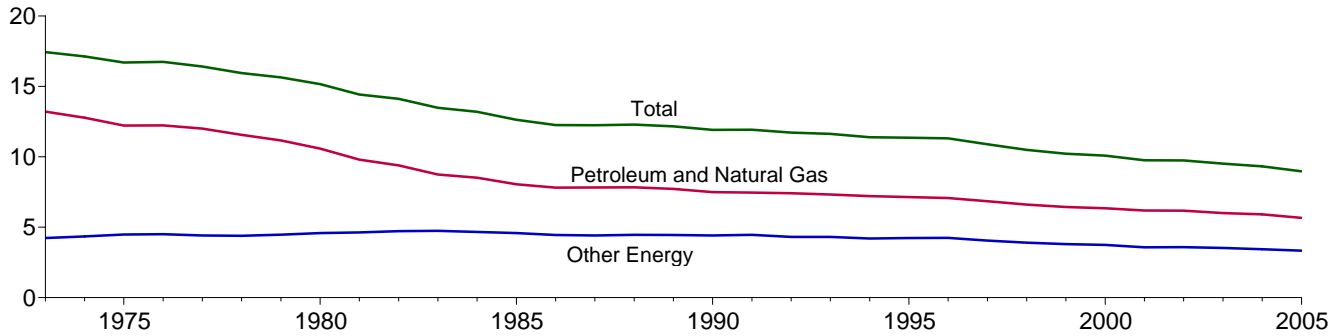
Notes: • Readers of Table 1.7 may be interested in a feature article, "Measuring Dependence on Imported Oil," that was published in the August 1995 *Monthly Energy Review*. • Petroleum is crude oil, lease condensate, unfinished oils, petroleum products, natural gas plant liquids, and nonhydrocarbon compounds blended into finished petroleum products. • Beginning in October 1977, petroleum imported for the Strategic Petroleum

Reserves is included. • Annual averages may not equal average of months due to independent rounding. • U.S. geographic coverage is the 50 States and the District of Columbia. U.S. exports include shipments to U.S. territories, and imports include receipts from U.S. territories.

Web Page: For annual data not displayed between 1973 and 1995, see <http://www.eia.doe.gov/emeu/mer/overview.html>.

Sources: • **Columns 1-6:** Tables 3.1a, 3.1b, 3.3b, and 3.3d. • **Columns 7-12:** Calculated by Energy Information Administration.

**Figure 1.8 Energy Consumption per Dollar of Gross Domestic Product**  
(Thousand Btu per Chained (2000) Dollar)



Web Page: <http://www.eia.doe.gov/emeu/mer/overview.html>.  
Source: Table 1.8.

**Table 1.8 Energy Consumption per Dollar of Gross Domestic Product**

	Energy Consumption			Gross Domestic Product (GDP)	Energy Consumption per Dollar of GDP		
	Petroleum and Natural Gas <sup>a</sup>	Other Energy <sup>a, b</sup>	Total <sup>a</sup>		Petroleum and Natural Gas <sup>a</sup>	Other Energy <sup>a, b</sup>	Total <sup>a</sup>
	Quadrillion Btu				Billion Chained (2000) Dollars	Thousand Btu per Chained (2000) Dollar	
1973 Year .....	57.352	18.356	75.708	4,341.5	13.21	4.23	17.44
1974 Year .....	55.187	18.804	73.991	4,319.6	12.78	4.35	17.13
1975 Year .....	52.678	19.321	71.999	4,311.2	12.22	4.48	16.70
1976 Year .....	55.520	20.492	76.012	4,540.9	12.23	4.51	16.74
1977 Year .....	57.053	20.947	78.000	4,750.5	12.01	4.41	16.42
1978 Year .....	57.966	22.021	79.986	5,015.0	11.56	4.39	15.95
1979 Year .....	57.789	23.114	80.903	5,173.4	11.17	4.47	15.64
1980 Year .....	54.596	23.693	78.289	5,161.7	10.58	4.59	15.17
1981 Year .....	51.859	24.483	76.342	5,291.7	9.80	4.63	14.43
1982 Year .....	48.736	24.516	73.253	5,189.3	9.39	4.72	14.12
1983 Year .....	47.411	25.690	73.101	5,423.8	8.74	4.74	13.48
1984 Year .....	49.558	27.178	76.736	5,813.6	8.52	4.67	13.20
1985 Year .....	48.756	27.713	76.469	6,053.7	8.05	4.58	12.63
1986 Year .....	48.904	27.878	76.782	6,263.6	7.81	4.45	12.26
1987 Year .....	50.609	28.616	79.225	6,475.1	7.82	4.42	12.24
1988 Year .....	52.774	30.070	82.844	6,742.7	7.83	4.46	12.29
1989 Year .....	53.923	31.034	84.957	6,981.4	7.72	4.45	12.17
1990 Year .....	53.282	31.422	84.704	7,112.5	7.49	4.42	11.91
1991 Year .....	52.994	31.649	84.643	7,100.5	7.46	4.46	11.92
1992 Year .....	54.362	31.630	85.992	7,336.6	7.41	4.31	11.72
1993 Year .....	<sup>a</sup> 55.193	<sup>a</sup> 32.524	<sup>a</sup> 87.619	7,532.7	<sup>a</sup> 7.33	<sup>a</sup> 4.32	<sup>a</sup> 11.63
1994 Year .....	56.512	32.879	89.283	7,835.5	7.21	4.20	11.39
1995 Year .....	57.338	34.028	91.250	8,031.7	7.14	4.24	11.36
1996 Year .....	58.954	35.385	94.256	8,328.9	7.08	4.25	11.32
1997 Year .....	59.594	35.280	94.768	8,703.5	6.85	4.05	10.89
1998 Year .....	59.869	35.440	95.192	9,066.9	6.60	3.91	10.50
1999 Year .....	60.970	35.988	96.836	9,470.3	6.44	3.80	10.23
2000 Year .....	62.320	36.781	98.961	9,817.0	6.35	3.75	10.08
2001 Year .....	61.239	35.379	96.472	9,890.7	6.19	3.58	9.75
2002 Year .....	62.030	36.022	97.877	10,048.8	6.17	3.58	9.74
2003 Year .....	62.014	36.433	98.209	10,320.6	6.01	3.53	9.52
2004 Year .....	63.630	36.988	100.318	10,755.7	5.92	3.44	9.33
2005 Year .....	63.012	37.167	99.840	11,134.6	5.66	3.34	8.97

<sup>a</sup> Beginning in 1993, ethanol blended into motor gasoline is included in both "Petroleum and Natural Gas" and "Other Energy," but is counted only once in total consumption.

<sup>b</sup> "Other Energy" is coal, nuclear electric power, renewable energy, and net imports of coal coke and electricity.

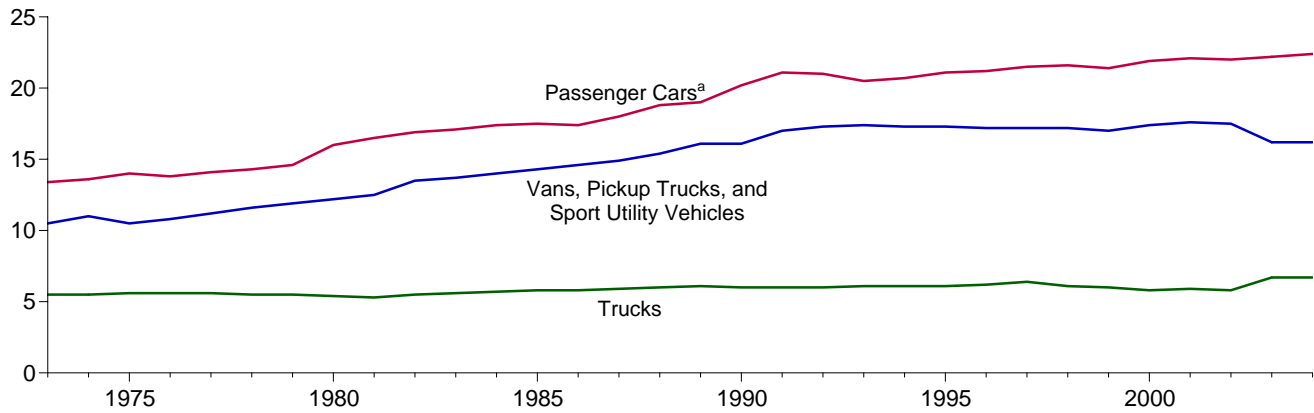
Notes: • Totals may not equal sum of components due to independent rounding. • Geographic coverage is the 50 States and the District of Columbia.

Web Page: <http://www.eia.doe.gov/emeu/mer/overview.html>.

Sources: • **Energy Consumption:** Table 1.3. • **Gross Domestic Product: 1973-2003**—U.S. Department of Commerce, Bureau of Economic Analysis, *Survey of Current Business*, August 2005, Table 2A. **2004 and 2005**—U.S. Department of Commerce, Bureau of Economic Analysis, *BEA News Release*, February 28, 2006, Table 3, which is available at Web site <http://www.bea.gov/bea/newsrel/gdpnewsrelease.htm>.



**Figure 1.9 Motor Vehicle Fuel Rates**  
(Miles per Gallon)



<sup>a</sup>Motorcycles are included through 1989.

Web Page: <http://www.eia.doe.gov/emeu/mer/overview.html>.

Source: Table 1.9.

**Table 1.9 Motor Vehicle Mileage, Fuel Consumption, and Fuel Rates**

	Passenger Cars <sup>a</sup>			Vans, Pickup Trucks, and Sport Utility Vehicles <sup>b</sup>			Trucks <sup>c</sup>			All Motor Vehicles <sup>d</sup>		
	Mileage (miles per vehicle)	Fuel Consumption (gallons per vehicle)	Fuel Rate (miles per gallon)	Mileage (miles per vehicle)	Fuel Consumption (gallons per vehicle)	Fuel Rate (miles per gallon)	Mileage (miles per vehicle)	Fuel Consumption (gallons per vehicle)	Fuel Rate (miles per gallon)	Mileage (miles per vehicle)	Fuel Consumption (gallons per vehicle)	Fuel Rate (miles per gallon)
1973	9,884	737	13.4	9,779	931	10.5	15,370	2,775	5.5	10,099	850	11.9
1974	9,221	677	13.6	9,452	862	11.0	14,995	2,708	5.5	9,493	788	12.0
1975	9,309	665	14.0	9,829	934	10.5	15,167	2,722	5.6	9,627	790	12.2
1976	9,418	681	13.8	10,127	934	10.8	15,438	2,764	5.6	9,774	806	12.1
1977	9,517	676	14.1	10,607	947	11.2	16,700	3,002	5.6	9,978	814	12.3
1978	9,500	665	14.3	10,968	948	11.6	18,045	3,263	5.5	10,077	816	12.4
1979	9,062	620	14.6	10,802	905	11.9	18,502	3,380	5.5	9,722	776	12.5
1980	8,813	551	16.0	10,437	854	12.2	18,736	3,447	5.4	9,458	712	13.3
1981	8,873	538	16.5	10,244	819	12.5	19,016	3,565	5.3	9,477	697	13.6
1982	9,050	535	16.9	10,276	762	13.5	19,931	3,647	5.5	9,644	686	14.1
1983	9,118	534	17.1	10,497	767	13.7	21,083	3,769	5.6	9,760	686	14.2
1984	9,248	530	17.4	11,151	797	14.0	22,550	3,967	5.7	10,017	691	14.5
1985	9,419	538	17.5	10,506	735	14.3	20,597	3,570	5.8	10,020	685	14.6
1986	9,464	543	17.4	10,764	738	14.6	22,143	3,821	5.8	10,143	692	14.7
1987	9,720	539	18.0	11,114	744	14.9	23,349	3,937	5.9	10,453	694	15.1
1988	9,972	531	18.8	11,465	745	15.4	22,485	3,736	6.0	10,721	688	15.6
1989	<sup>a</sup> 10,157	<sup>a</sup> 533	<sup>a</sup> 19.0	11,676	724	16.1	22,926	3,776	6.1	10,932	688	15.9
1990	10,504	520	20.2	11,902	738	16.1	23,603	3,953	6.0	11,107	677	16.4
1991	10,571	501	21.1	12,245	721	17.0	24,229	4,047	6.0	11,294	669	16.9
1992	10,857	517	21.0	12,381	717	17.3	25,373	4,210	6.0	11,558	683	16.9
1993	10,804	527	20.5	12,430	714	17.4	26,262	4,309	6.1	11,595	693	16.7
1994	10,992	531	20.7	12,156	701	17.3	25,838	4,202	6.1	11,683	698	16.7
1995	11,203	530	21.1	12,018	694	17.3	26,514	4,315	6.1	11,793	700	16.8
1996	11,330	534	21.2	11,811	685	17.2	26,092	4,221	6.2	11,813	700	16.9
1997	11,581	539	21.5	12,115	703	17.2	27,032	4,218	6.4	12,107	711	17.0
1998	11,754	544	21.6	12,173	707	17.2	25,397	4,135	6.1	12,211	721	16.9
1999	11,848	553	21.4	11,957	701	17.0	26,014	4,352	6.0	12,206	732	16.7
2000	11,976	547	21.9	11,672	669	17.4	25,617	4,391	5.8	12,164	720	16.9
2001	11,831	534	22.1	11,204	636	17.6	26,602	4,477	5.9	11,887	695	17.1
2002	12,202	555	22.0	11,364	650	17.5	27,071	4,642	5.8	12,171	719	16.9
2003	12,325	556	22.2	11,287	697	16.2	28,093	4,215	6.7	12,208	718	17.0
2004 <sup>P</sup>	12,497	557	22.4	11,044	682	16.2	27,719	4,157	6.7	12,190	715	17.1

<sup>a</sup> Through 1989, includes motorcycles.

<sup>b</sup> Includes a small number of trucks with 2 axles and 4 tires, such as step vans.

<sup>c</sup> Single-unit trucks with 2 axles and 6 or more tires, and combination trucks.

<sup>d</sup> Includes buses and motorcycles, which are not shown separately.

P=Preliminary.

Notes: Geographic coverage is the 50 States and the District of Columbia.

Web Page: <http://www.eia.doe.gov/emeu/mer/overview.html>.

Sources: • **Passenger Cars, 1990-1994:** U.S. Department of Transportation, Bureau of Transportation Statistics, *National Transportation Statistics 1998*, Table 4-13. • **All Other Data:** • **1973-1994**—Federal Highway Administration (FHWA), *Highway Statistics Summary to 1995*, Table VM-201A. • **1995 forward**—FHWA, *Highway Statistics*, annual reports, Table VM-1.

**Table 1.10 Heating Degree-Days by Census Division**

Census Divisions	February 1 through February 28					Cumulative July 1 through February 28				
	Normal <sup>a</sup>	2005	2006	Percent Change		Normal <sup>a</sup>	2005	2006	Percent Change	
				Normal to 2006	2005 to 2006				Normal to 2006	2005 to 2006
<b>New England</b> Connecticut, Maine, Massachusetts, New Hampshire, Rhode Island, Vermont .....	1,060	1,025	1,029	-3	(s)	4,768	4,671	4,328	-9	-7
<b>Middle Atlantic</b> New Jersey, New York, Pennsylvania .....	983	939	929	-5	-1	4,332	4,128	3,760	-13	-9
<b>East North Central</b> Illinois, Indiana, Michigan, Ohio, Wisconsin .....	1,061	938	1,015	-4	8	4,835	4,403	4,225	-13	-4
<b>West North Central</b> Iowa, Kansas, Minnesota, Missouri, Nebraska, North Dakota, South Dakota .....	1,078	902	1,059	-2	17	5,163	4,517	4,379	-15	-3
<b>South Atlantic</b> Delaware, Florida, Georgia, Maryland and the District of Columbia, North Carolina, South Carolina, Virginia, West Virginia .....	507	462	514	1	11	2,233	1,994	2,020	-10	1
<b>East South Central</b> Alabama, Kentucky, Mississippi, Tennessee .....	623	525	656	5	25	2,853	2,361	2,602	-9	10
<b>West South Central</b> Arkansas, Louisiana, Oklahoma, Texas .....	414	334	414	0	24	1,912	1,558	1,593	-17	2
<b>Mountain</b> Arizona, Colorado, Idaho, Montana, Nevada, New Mexico, Utah, Wyoming .....	737	691	720	-2	4	3,835	3,536	3,365	-12	-5
<b>Pacific<sup>b</sup></b> California, Oregon, Washington .....	439	411	426	-3	4	2,256	2,133	1,964	-13	-8
<b>U.S. Average<sup>b</sup></b> .....	<b>732</b>	<b>661</b>	<b>714</b>	<b>-2</b>	<b>8</b>	<b>3,388</b>	<b>3,087</b>	<b>2,966</b>	<b>-12</b>	<b>-4</b>

<sup>a</sup> "Normal" is based on calculations of data from 1971 through 2000.

<sup>b</sup> Excludes Alaska and Hawaii.

Notes: Degree-days are relative measurements of outdoor air temperature used as an index for heating and cooling energy requirements. Heating degree-days are the number of degrees that the daily average temperature falls below 65° F. Cooling degree-days are the number of degrees that the daily average temperature rises above 65° F. The daily average temperature is the mean of the maximum and minimum temperatures in a 24-hour period. For example, a weather station recording an average daily temperature of 40°

F would report 25 heating degree-days for that day (and 0 cooling degree-days). If a weather station recorded an average daily temperature of 78° F, cooling degree-days for that station would be 13 (and 0 heating degree days).

Web Pages: • See <http://www.eia.doe.gov/emeu/mer/overview.html> for current data. • See <http://www.eia.doe.gov/emeu/aer/overview.html> for historical data.

Sources: See end of section.

**Table 1.11 Cooling Degree-Days by Census Division**

Census Divisions	February 1 through February 28					Cumulative January 1 through February 28				
	Normal <sup>a</sup>	2005	2006	Percent Change		Normal <sup>a</sup>	2005	2006	Percent Change	
				Normal to 2006	2005 to 2006				Normal to 2006	2005 to 2006
<b>New England</b> Connecticut, Maine, Massachusetts, New Hampshire, Rhode Island, Vermont .....	0	0	0	( <sup>c</sup> )	( <sup>c</sup> )	0	0	0	( <sup>c</sup> )	( <sup>c</sup> )
<b>Middle Atlantic</b> New Jersey, New York, Pennsylvania .....	0	0	0	( <sup>c</sup> )	( <sup>c</sup> )	0	0	0	( <sup>c</sup> )	( <sup>c</sup> )
<b>East North Central</b> Illinois, Indiana, Michigan, Ohio, Wisconsin .....	0	0	0	( <sup>c</sup> )	( <sup>c</sup> )	0	0	0	( <sup>c</sup> )	( <sup>c</sup> )
<b>West North Central</b> Iowa, Kansas, Minnesota, Missouri, Nebraska, North Dakota, South Dakota .....	0	0	0	( <sup>c</sup> )	( <sup>c</sup> )	0	0	0	( <sup>c</sup> )	( <sup>c</sup> )
<b>South Atlantic</b> Delaware, Florida, Georgia, Maryland and the District of Columbia, North Carolina, South Carolina, Virginia, West Virginia .....	30	26	19	( <sup>c</sup> )	( <sup>c</sup> )	64	55	48	( <sup>c</sup> )	( <sup>c</sup> )
<b>East South Central</b> Alabama, Kentucky, Mississippi, Tennessee .....	4	3	1	( <sup>c</sup> )	( <sup>c</sup> )	12	10	5	( <sup>c</sup> )	( <sup>c</sup> )
<b>West South Central</b> Arkansas, Louisiana, Oklahoma, Texas .....	15	21	11	( <sup>c</sup> )	( <sup>c</sup> )	29	47	28	( <sup>c</sup> )	( <sup>c</sup> )
<b>Mountain</b> Arizona, Colorado, Idaho, Montana, Nevada, New Mexico, Utah, Wyoming .....	3	0	2	( <sup>c</sup> )	( <sup>c</sup> )	4	1	3	( <sup>c</sup> )	( <sup>c</sup> )
<b>Pacific<sup>b</sup></b> California, Oregon, Washington .....	1	0	0	( <sup>c</sup> )	( <sup>c</sup> )	3	0	0	( <sup>c</sup> )	( <sup>c</sup> )
<b>U.S. Average<sup>b</sup></b> .....	<b>8</b>	<b>7</b>	<b>5</b>	<b>(<sup>c</sup>)</b>	<b>(<sup>c</sup>)</b>	<b>17</b>	<b>16</b>	<b>12</b>	<b>(<sup>c</sup>)</b>	<b>(<sup>c</sup>)</b>

<sup>a</sup> "Normal" is based on calculations of data from 1971 through 2000.

<sup>b</sup> Excludes Alaska and Hawaii.

<sup>c</sup> Percent change is not meaningful: normal is less than 100 or ratio is incalculable.

Notes: Degree-days are relative measurements of outdoor air temperature used as an index for heating and cooling energy requirements. Cooling degree-days are the number of degrees that the daily average temperature rises above 65° F. Heating degree-days are the number of degrees that the daily average temperature falls below 65° F. The daily average temperature is the mean of the maximum and minimum temperatures in a 24-hour period.

For example, if a weather station recorded an average daily temperature of 78° F, cooling degree-days for that station would be 13 (and 0 heating degree-days). A weather station recording an average daily temperature of 40° F would report 25 heating degree-days for that day (and 0 cooling degree-days).

Web Pages: • See <http://www.eia.doe.gov/emeu/mer/overview.html> for current data. • See <http://www.eia.doe.gov/emeu/aer/overview.html> for historical data.

Sources: See end of section.

## Energy Overview

**Note 1. Energy Production:** Includes production of fossil fuels (coal, dry natural gas, crude oil and lease condensate, and natural gas plant liquids), nuclear electric power, and renewable energy. Renewable energy production is assumed to be equivalent to: end-use consumption of wood, waste, alcohol fuels, geothermal heat pump and direct use energy, and solar thermal direct use and photovoltaic energy; and electricity net generation from conventional hydroelectric power, wood, waste, geothermal, solar, and wind. Approximate heat contents (Btu values) are derived by using the conversion factors provided in Appendix A. See Section 10 for further information on renewable energy.

**Note 2. Energy Consumption:** Includes consumption of fossil fuels (coal, natural gas, and petroleum), some secondary energy derived from fossil fuels (supplemental gaseous fuels and coal coke net imports), nuclear electric power, renewable energy, and net imports of electricity. Renewable energy consumption includes: end-use consumption of wood, waste, alcohol fuels, geothermal heat pump and direct use energy, and solar thermal direct use and photovoltaic energy; and net electricity generation from conventional hydroelectric power, wood, waste, geothermal, solar, and wind. Approximate heat contents (Btu values) are derived by using the conversion factors provided in Appendix A. See Section 10 for further information on renewable energy.

**Note 3. Energy Imports:** Includes imports of fossil fuels (coal, natural gas, and petroleum, including crude oil imported for the Strategic Petroleum Reserve), some secondary energy derived from fossil fuels (coal coke imports), and electricity. Approximate heat contents (Btu values) are derived by using the conversion factors provided in Appendix A. See Section 10 for further information on renewable energy.

**Note 4. Energy Exports:** Includes exports of fossil fuels (coal, natural gas, and petroleum), some secondary energy derived from fossil fuels (coal coke exports), and electricity. Approximate heat contents (Btu values) are derived by using the conversion factors provided in Appendix A. See Section 10 for further information on renewable energy.

**Note 5. Merchandise Trade Value:** Import data presented are based on the customs value. That value does not include insurance and freight and is consequently lower than the cost, insurance, and freight (CIF) value, which is also reported by the Bureau of the Census. All export data, and import data prior to 1981, are on a free alongside ship (f.a.s.) Basis.

“Balance” is exports minus imports; a positive balance indicates a surplus trade value and a negative balance indicates a deficit trade value. “Energy” includes mineral fuels, lubricants, and related material. “Non-Energy Balance” and “Total Merchandise” include foreign exports (i.e., re-exports) and nonmonetary gold and Department of Defense Grant-Aid shipments. The “Non-Energy Balance”

is calculated by subtracting the “Energy” from the “Total Merchandise Balance.”

“Imports” consist of government and nongovernment shipments of merchandise into the 50 States, the District of Columbia, Puerto Rico, the U.S. Virgin Islands, and the U.S. Foreign Trade Zones. They reflect the total arrival from foreign countries of merchandise that immediately entered consumption channels, warehouses, the Foreign Trade Zones, or the Strategic Petroleum Reserve. They exclude shipments between the United States, Puerto Rico, and U.S. possessions, shipments to U.S. Armed Forces and diplomatic missions abroad for their own use, U.S. goods returned to the United States by its Armed Forces, and in-transit shipments.

### Table 1.5 Sources

U.S. Department of Commerce, Bureau of the Census, Foreign Trade Division:

#### Petroleum Exports

1974-1987: “U.S. Exports,” FT410, December issues.  
1988 and 1989: “Report on U.S. Merchandise Trade,” Final Revisions.  
1990-1992: “U.S. Merchandise Trade,” Final Report.  
1993-2004: “U.S. International Trade in Goods and Services,” Annual Revision.  
2005 and 2006: “U.S. International Trade in Goods and Services,” FT-900, monthly.

#### Petroleum Imports

1974-1987: “U.S. Merchandise Trade,” FT900, December issues, 1975-1988.  
1988 and 1989: “Report on U.S. Merchandise Trade,” Final Revisions.  
1990-1993: “U.S. Merchandise Trade,” Final Report.  
1994-2004: “U.S. International Trade in Goods and Services,” Annual Revision.  
2005 and 2006: “U.S. International Trade in Goods and Services,” FT-900, monthly.

#### Energy Exports and Imports

1974-1987: U.S. merchandise trade press releases and database printouts for adjustments.  
1988: January-July, monthly FT-900 supplement, 1989 issues. August-December, monthly FT-900, 1989 issues.  
1989: Monthly FT-900, 1990 issues.  
1990-1992: “U.S. Merchandise Trade,” Final Report.  
1993-2004: “U.S. International Trade in Goods and Services,” Annual Revision.  
2005 and 2006: “U.S. International Trade in Goods and Services,” FT-900, monthly.

#### Petroleum, Energy, and Non-Energy Balances

Calculated by the Energy Information Administration.

### **Total Merchandise**

1974-1987: U.S. merchandise trade press releases and database printouts for adjustments.

1988: "Report on U.S. Merchandise Trade, 1988 Final Revisions," August 18, 1989.

1989: "Report on U.S. Merchandise Trade, 1989 Revisions," July 10, 1990.

1990: "U.S. Merchandise Trade, 1990 Final Report," May 10, 1991, and "U.S. Merchandise Trade, December 1992," February 18, 1993, page 3

1991: "U.S. Merchandise Trade, 1992 Final Report," May 12, 1993

1992-2004: "U.S. International Trade in Goods and Services," Annual Revision

2005 and 2006: "U.S. International Trade in Goods and Services," FT-900, monthly.

### **Tables 1.10 and 1.11 Sources**

There are several degree-day databases maintained by the National Oceanic and Atmospheric Administration. The information published here is developed by the National Weather Service Climate Prediction Center, Camp Springs, MD. The data are available weekly with monthly summaries and are based on mean daily temperatures recorded at about 200 major weather stations around the country. The temperature information recorded at those weather stations is used to calculate statewide degree-day averages based on population.

The State figures are then aggregated into Census Divisions and into the national average. The population weights currently used represent resident State population data estimated for the 2000 Census by the U.S. Department of Commerce, Bureau of the Census. The data provided here are available sooner than the Historical Climatology Series 5-1 (heating degree-days) and 5-2 (cooling degree-days) developed by the National Climatic Data Center, Asheville, NC, which compiles data from some 8,000 weather stations.