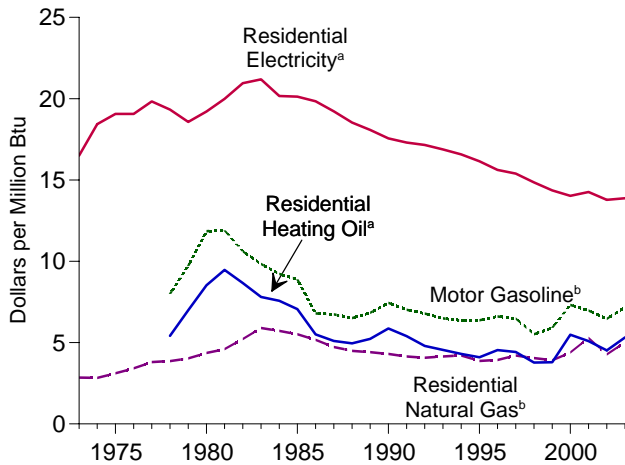
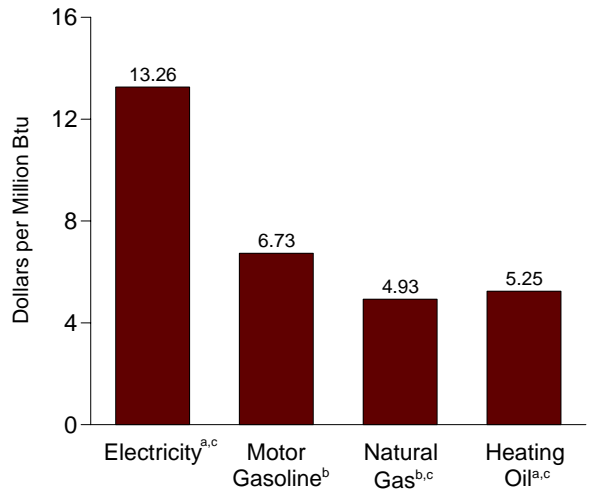


Figure 1.6 Cost of Fuels to End Users in Constant (1982-1984) Dollars

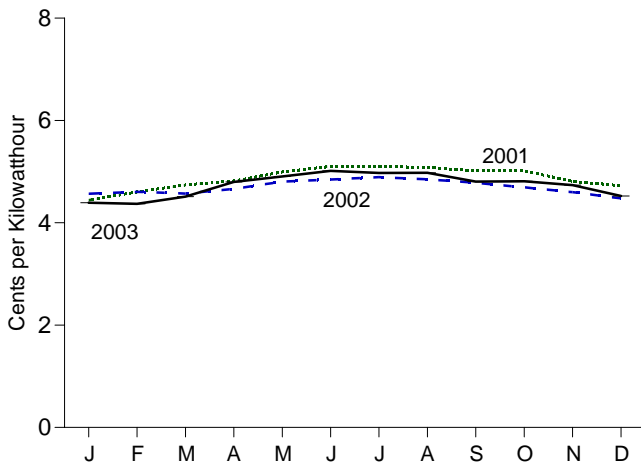
Costs, 1973-2003



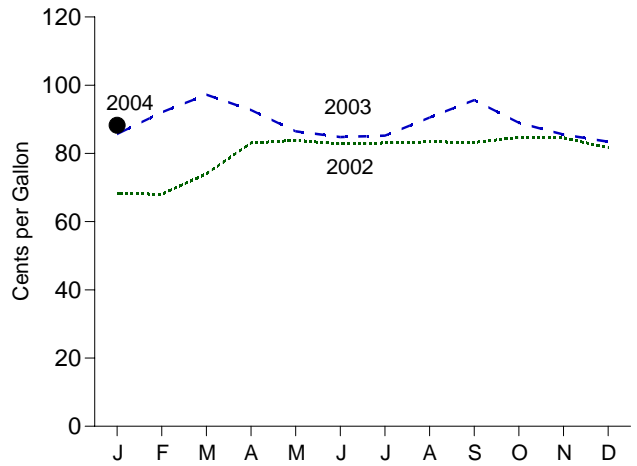
Costs, December 2003



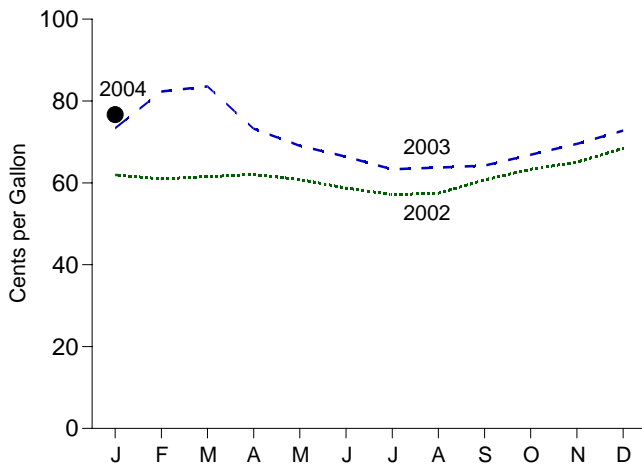
Residential Electricity^a, Monthly



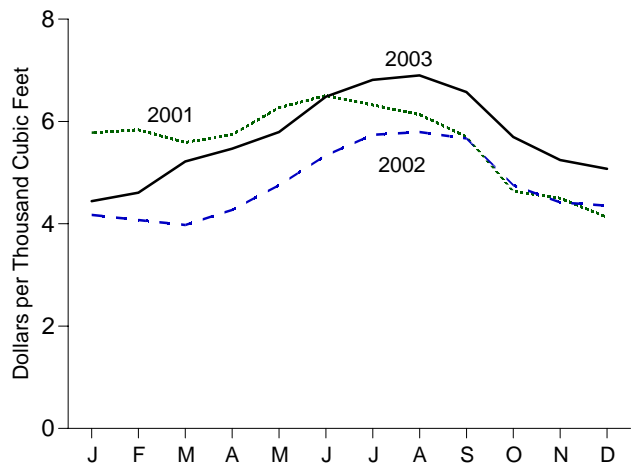
Motor Gasoline^b, Monthly



Residential Heating Oil^a, Monthly



Residential Natural Gas^b, Monthly



^aExcludes taxes.
^bIncludes taxes.
^cResidential.

Note: Because vertical scales differ, graphs should not be compared.
 Web Page: <http://www.eai.doe.gov/emeu/mer/overview.html>.
 Source: Table 1.6.